

# HGP-55AI

- ▶ Displacement : 22~90 cc/rev (single)
- ▶ Max. Pressure : 300 kgf/cm<sup>2</sup>  
( 4200psi )
- ▶ Flange : DIN 4-bolt

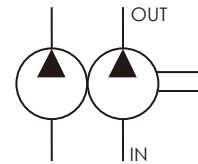
## ORDER CODES

**HGP-55AI** - **F** - **8080** - **R** - **Z** - **4BD**

1                      2                      3                      4                      5                      6

<b>1</b> Model Name	HGP-55AI	
<b>2</b> Mounting	F	flange type
<b>3</b> Delivery Capacity	2222, 2626, 3333, 4444, 4848, 5555, 6363, 7575, 8080, 9090	
<b>4</b> Rotation Direction	R	clockwise
	L	counter - clockwise
	X	straight shaft
<b>5</b> Shaft Type	Y	spline shaft
	Z	taper shaft
<b>6</b> Flange Mounting Type	4BD	DIN 4-bolt

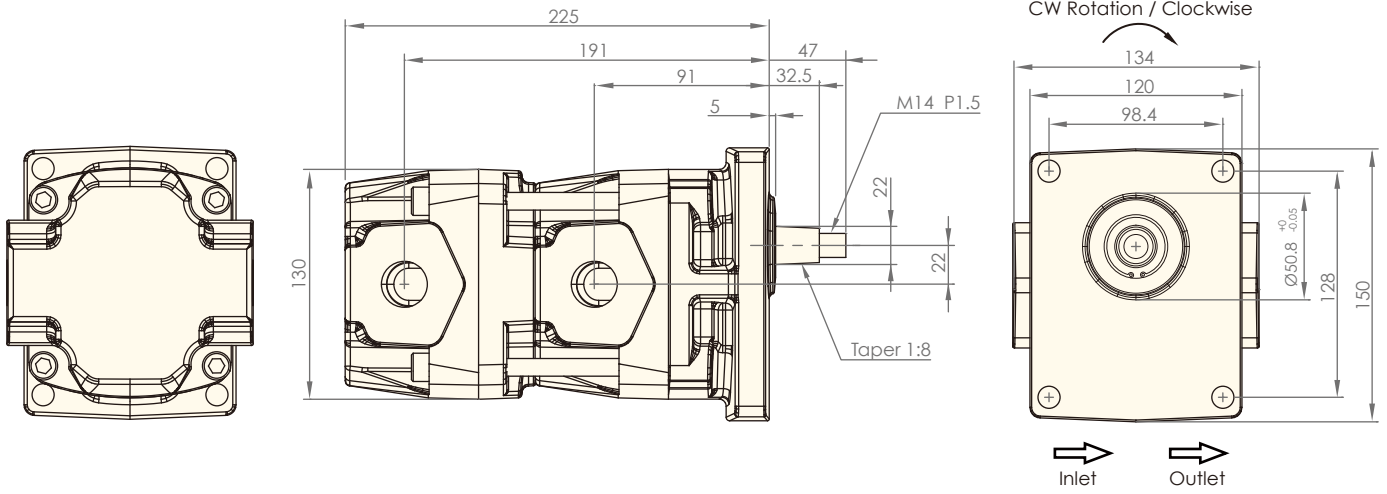
## SCHEMATIC SYMBOL

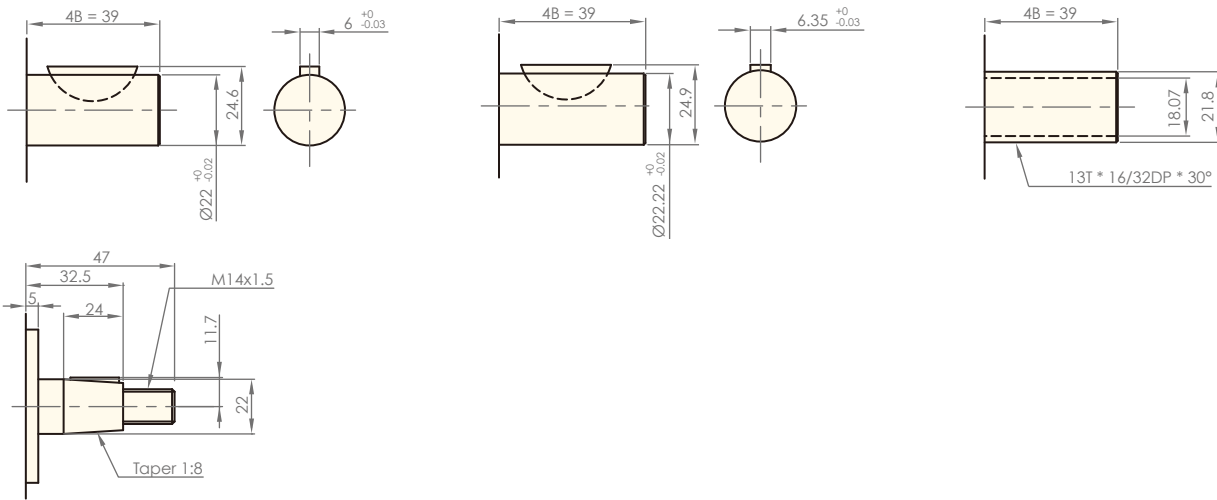
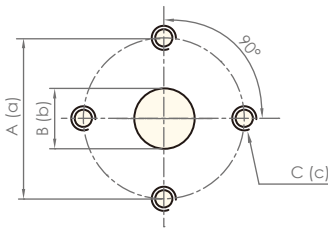


## SPECIFICATIONS

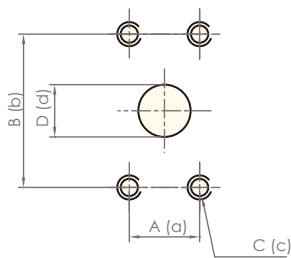
Model	Accurate Displacement Capacity ( cc/rev )	Operational Pressure ( kgf/cm <sup>2</sup> )	Max. Pressure ( kgf/cm <sup>2</sup> )	Speed ( r.p.m. )		Ports Size ( PT )		Weight ( kg )
				Loaded	Unloaded	Inlet	Outlet	
HGP-55AI-2222	22+22	280	300	3000	500	1"	3/4"	14.57
HGP-55AI-2626	26+26	280	300	3000	500	1"	3/4"	14.73
HGP-55AI-3333	33+33	280	300	3000	500	1"	3/4"	15.01
HGP-55AI-4444	44+44	240	300	3000	500	1 1/4"	1"	15.45
HGP-55AI-4848	48+48	240	300	3000	500	1 1/4"	1"	15.61
HGP-55AI-5555	55+55	210	250	3000	500	1 1/4"	1"	15.89
HGP-55AI-6363	63+63	190	240	2750	500	1 1/4"	1"	16.21
HGP-55AI-7575	75+75	170	210	2750	500	1 1/4"	1"	16.69
HGP-55AI-8080	80+80	170	210	2500	500	1 1/4"	1"	16.89
HGP-55AI-9090	90+90	150	180	2500	500	1 1/4"	1"	17.29

\* We provide many options to meet your displacement inquiries of tandem gear pumps, such as HGP-55AI-6348 (63+48 cc/rev).

**DIMENSIONS** (unit : mm)**HGP-55AI-Z-4BD**

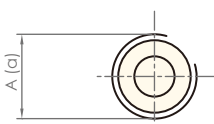
**ADDITIONAL DIMENSION (unit : mm)**
**Dimension of Shaft**

**Inlet and Outlet Size**

**Flange Type**

Inlet			Outlet		
A	B	C	a	b	c
40	22	M8	40	22	M8
51	27	M10	51	27	M10
62	34	M10	62	34	M10
62	34	M12	62	34	M12

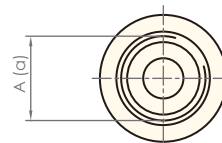

**Flange Type**

Inlet				Outlet			
A	B	C	D	a	b	c	d
22.2	47.6	3/8"-16UNC (2B)	18.5	22.2	47.6	3/8"-16UNC (2B)	18.5
26.2	52.4	3/8"-16UNC (2B)	24	26.2	52.4	3/8"-16UNC (2B)	24
30.2	58.7	7/16"-14UNC (4B)	30	30.2	58.7	7/16"-14UNC (4B)	30
35.7	69.8	1/2"-13UNC (2B)	39	35.7	69.8	1/2"-13UNC (2B)	39
42.9	77.8	1/2"-13UNC (2B)	51	42.9	77.8	1/2"-13UNC (2B)	51

\* UNC : Unified Coarse Thread

**G, BSP, PF**


Inlet	Outlet
A	a
G 3/8"	G 3/8"
G 3/4"	G 3/4"
G 1"	G 1"
G 1 1/4"	G 1 1/4"
G 1 1/2"	G 1 1/2"

**UNF**


Inlet	Outlet
A	a
9/16"-18UNF	9/16"-18UNF
1 1/16"-12UNF	1 1/16"-12UNF
1 5/16"-12UNF	1 5/16"-12UNF
1 5/8"-12UNF	1 5/8"-12UNF
1 7/8"-13UNF	1 7/8"-13UNF
1 1/16"-14UNF	1 1/16"-14UNF
1 5/16"-14UNF	1 5/16"-14UNF