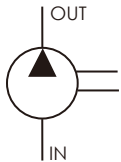


# HGP-4A

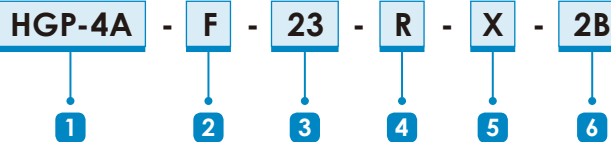
- Displacement : 20~70 cc/rev
- Max. Pressure : 300 kgf/cm<sup>2</sup>  
( 4200psi )
- Flange : SAE 2-bolt



## SCHEMATIC SYMBOL



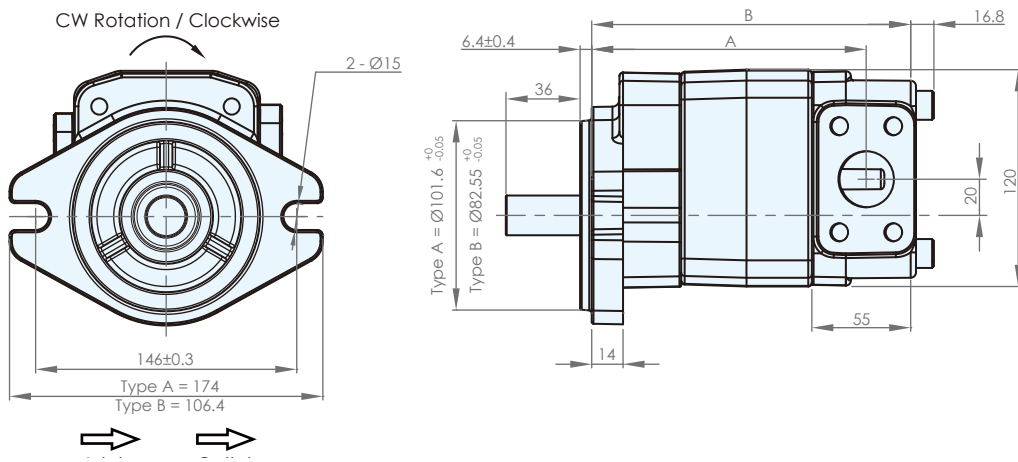
## ORDER CODES



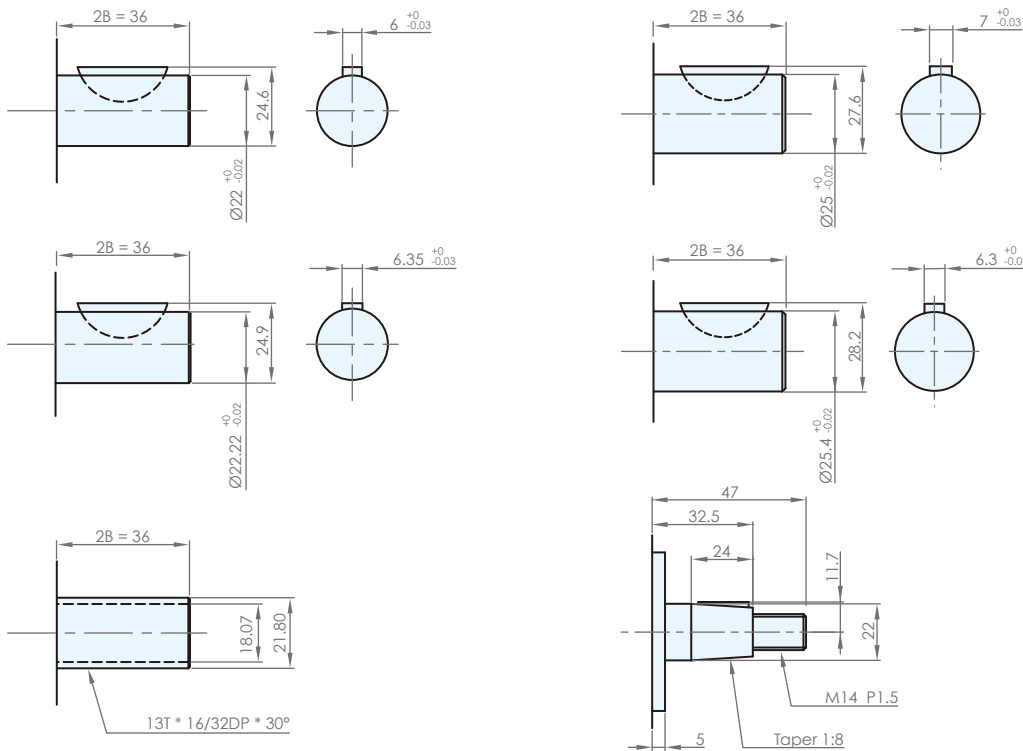
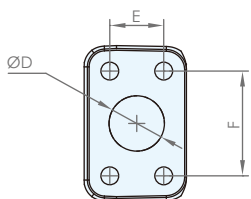
<b>1</b> Model Name	HGP-4A	
<b>2</b> Mounting	F	flange type
<b>3</b> Delivery Capacity	20, 23, 25, 28, 32, 36, 40, 45, 50, 55, 60, 70	
<b>4</b> Rotation Direction	R	clockwise
	L	counter - clockwise
<b>5</b> Shaft Type	X	straight shaft
	Y	spline shaft
	Z	taper shaft
<b>6</b> Flange Mounting Type	2B	SAE 2-bolt

## SPECIFICATIONS

Model	Accurate Displacement Capacity (cc/rev)	Operational Pressure (kgf/cm <sup>2</sup> )	Max. Pressure (kgf/cm <sup>2</sup> )	Speed (r.p.m.)		Ports Size (PT)		Weight (kg)
				Loaded	Unloaded	Inlet	Outlet	
HGP-4A-20	20	250	300	600	3000	1"	3/4"	4.1
HGP-4A-23	22.5	250	300	600	3000	1"	3/4"	4.6
HGP-4A-25	25	250	300	600	3000	1"	3/4"	5.1
HGP-4A-28	28	250	300	600	3000	1"	3/4"	5.7
HGP-4A-32	31.5	250	300	600	3000	1"	3/4"	6.4
HGP-4A-36	35.5	210	250	600	3000	1"	3/4"	7.1
HGP-4A-40	40	210	250	600	3000	1"	3/4"	8.0
HGP-4A-45	45	210	250	600	2600	1"	3/4"	8.8
HGP-4A-50	50	175	210	600	2500	1 1/4"	1"	9.7
HGP-4A-55	55	175	210	600	2400	1 1/4"	1"	10.7
HGP-4A-60	60	140	175	600	2000	1 1/4"	1"	11.8
HGP-4A-70	70	125	140	600	2000	1 1/4"	1"	13.1

**DIMENSIONS ( unit : mm )**


Model	A	B
HGP-4A-20	108.4	135.9
HGP-4A-23	110.9	138
HGP-4A-25	113.3	140.8
HGP-4A-28	116.3	143.8
HGP-4A-32	119.8	147.2
HGP-4A-36	123.7	151.2
HGP-4A-40	128.2	155.6
HGP-4A-45	133.1	160.6
HGP-4A-50	138	165.5
HGP-4A-55	143.4	170.9
HGP-4A-60	148.4	175.9
HGP-4A-70	157.4	184.9

**ADDITIONAL DIMENSION ( unit : mm )**
**Dimension of Shaft**

**Inlet and Outlet Size**


	Inlet	Outlet
D	25	31
E	26.2 ± 0.25	30.2 ± 0.25
F	52.4 ± 0.25	58.7 ± 0.25