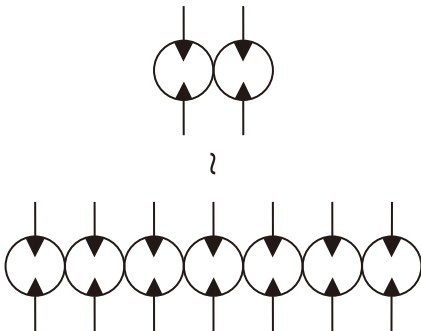


# DFM-302A

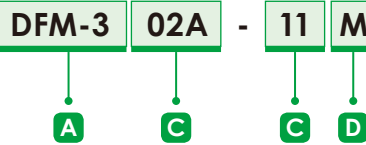
- Displacement : 4~35 cc/rev
- Max. Pressure : 210 kgf/cm<sup>2</sup>  
( 3000psi )



## SCHEMATIC SYMBOL



## ORDER CODES



<b>A</b> Model Name	DFM-3	
<b>B</b> Stations	02A	2 stations
	03A	3 stations
	04A	4 stations
	05A	5 stations
	06A	6 stations
	07A	7 stations
<b>C</b> Flow Rate	4, 6, 8, 11, 13, 14, 17, 19, 23, 25, 28, 30, 35	
<b>D</b> Functional Type	M	synchronous flow divider

## SPECIFICATIONS

Model	Accurate Displacement Capacity ( cc/rev )	Operational Pressure ( kgf/cm <sup>2</sup> )	Speed ( r.p.m. )		Ports Size ( PT )	
			Loaded	Unloaded	Inlet	Outlet
DFM-30*A-4	4	210	1000	2000	3/4"	1/2"
DFM-30*A-6	6	210	1000	2000	3/4"	1/2"
DFM-30*A-8	8.4	210	1000	2000	3/4"	1/2"
DFM-30*A-11	11	210	1000	2000	3/4"	1/2"
DFM-30*A-13	13	210	1000	2000	3/4"	1/2"
DFM-30*A-14	14.3	210	1000	2000	3/4"	1/2"
DFM-30*A-17	16.5	210	1000	2000	3/4"	1/2"
DFM-30*A-19	19.2	210	1000	2000	3/4"	1/2"
DFM-30*A-23	23	210	1000	2000	3/4"	1/2"
DFM-30*A-25	25	210	1000	2000	1"	3/4"
DFM-30*A-28	28	210	1000	2000	1"	3/4"
DFM-30*A-30	30	210	1000	2000	1"	3/4"
DFM-30*A-35	35	210	1000	2000	1"	3/4"

\* The initial pressure : 30kgf/cm<sup>2</sup>

**MODEL WEIGHT**
**DFM-302A**

Model	Weight ( kg )
DFM-302A-4	4.64
DFM-302A-6	4.80
DFM-302A-8	4.96
DFM-302A-11	5.26
DFM-302A-13	5.46
DFM-302A-14	5.58
DFM-302A-17	5.83
DFM-302A-19	6.04
DFM-302A-23	6.41
DFM-302A-25	6.54
DFM-302A-28	6.76
DFM-302A-30	6.96
DFM-302A-35	7.48

**DFM-303A**

Model	Weight ( kg )
DFM-303A-4	6.75
DFM-303A-6	6.99
DFM-303A-8	7.23
DFM-303A-11	7.68
DFM-303A-13	7.98
DFM-303A-14	8.16
DFM-303A-17	8.52
DFM-303A-19	8.85
DFM-303A-23	9.45
DFM-303A-25	9.60
DFM-303A-28	9.93
DFM-303A-30	10.23
DFM-303A-35	11.01

**DFM-304A**

Model	Weight ( kg )
DFM-304A-4	8.86
DFM-304A-6	9.18
DFM-304A-8	9.50
DFM-304A-11	10.10
DFM-304A-13	10.50
DFM-304A-14	10.75
DFM-304A-17	11.18
DFM-304A-19	11.66
DFM-304A-23	12.46
DFM-304A-25	12.66
DFM-304A-28	13.10
DFM-304A-30	13.50
DFM-304A-35	14.54

**DFM-305A**

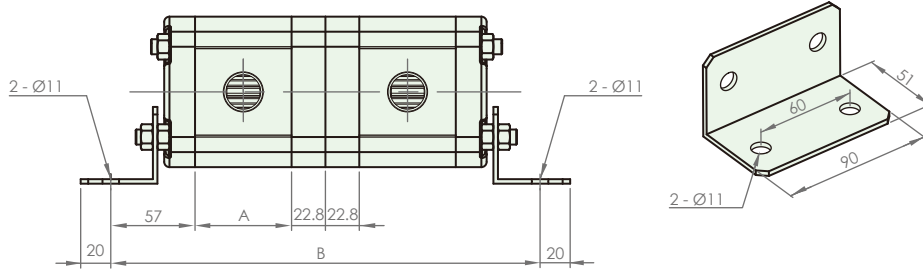
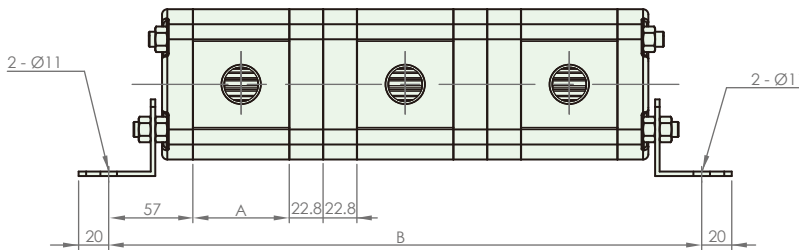
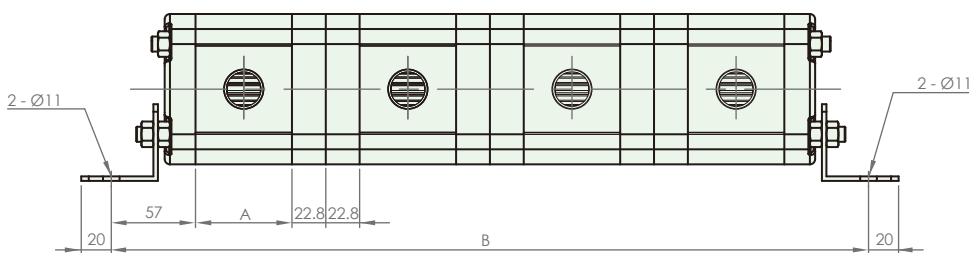
Model	Weight ( kg )
DFM-305A-4	10.97
DFM-305A-6	11.37
DFM-305A-8	11.77
DFM-305A-11	12.52
DFM-305A-13	13.02
DFM-305A-14	13.32
DFM-305A-17	13.87
DFM-305A-19	14.47
DFM-305A-23	15.47
DFM-305A-25	15.72
DFM-305A-28	16.27
DFM-305A-30	16.77
DFM-305A-35	18.07

**DFM-306A**

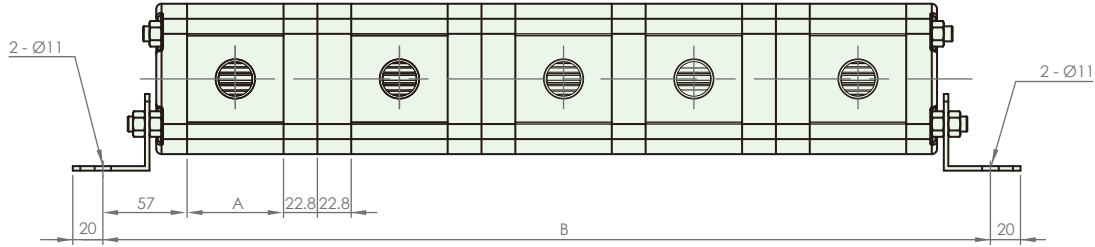
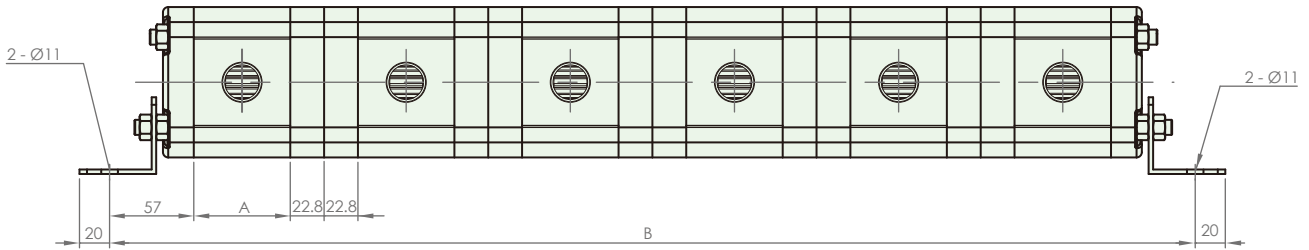
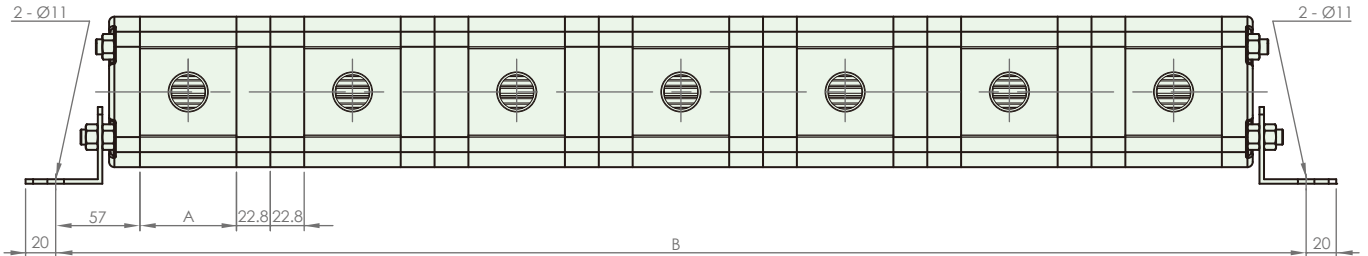
Model	Weight ( kg )
DFM-306A-4	13.08
DFM-306A-6	13.56
DFM-306A-8	14.04
DFM-306A-11	14.94
DFM-306A-13	15.54
DFM-306A-14	15.9
DFM-306A-17	16.56
DFM-306A-19	17.28
DFM-306A-23	18.48
DFM-306A-25	18.78
DFM-306A-28	19.44
DFM-306A-30	20.04
DFM-306A-35	21.60

**DFM-307A**

Model	Weight ( kg )
DFM-307A-4	15.19
DFM-307A-6	15.75
DFM-307A-8	16.31
DFM-307A-11	17.36
DFM-307A-13	18.06
DFM-307A-14	18.48
DFM-307A-17	19.25
DFM-307A-19	20.09
DFM-307A-23	21.49
DFM-307A-25	21.84
DFM-307A-28	22.61
DFM-307A-30	23.31
DFM-307A-35	25.13

**DIMENSIONS ( unit : mm )**
**DFM-302A**

**DFM-303A**

**DFM-304A**


Model	A	B	Model	A	B	Model	A	B
DFM-302A-4	49	257.6	DFM-303A-4	49	352.2	DFM-304A-4	49	446.8
DFM-302A-6	52	263.6	DFM-303A-6	52	361.2	DFM-304A-6	52	458.8
DFM-302A-8	55	269.6	DFM-303A-8	55	370.2	DFM-304A-8	55	470.8
DFM-302A-11	60	279.6	DFM-303A-11	60	385.2	DFM-304A-11	60	490.8
DFM-302A-13	64	287.6	DFM-303A-13	64	397.2	DFM-304A-13	64	506.8
DFM-302A-14	66	291.6	DFM-303A-14	66	403.2	DFM-304A-14	66	514.8
DFM-302A-17	70	299.6	DFM-303A-17	70	415.2	DFM-304A-17	70	530.8
DFM-302A-19	74	307.6	DFM-303A-19	74	427.2	DFM-304A-19	74	546.8
DFM-302A-23	81	321.6	DFM-303A-23	81	448.2	DFM-304A-23	81	574.8
DFM-302A-25	84	327.6	DFM-303A-25	84	457.2	DFM-304A-25	84	586.8
DFM-302A-28	88	335.6	DFM-303A-28	88	469.2	DFM-304A-28	88	602.8
DFM-302A-30	92	343.6	DFM-303A-30	92	481.2	DFM-304A-30	92	618.8
DFM-302A-35	102	363.6	DFM-303A-35	102	511.2	DFM-304A-35	102	658.8

**DIMENSIONS ( unit : mm )**
**DFM-305A**

**DFM-306A**

**DFM-307A**


Model	A	B	Model	A	B	Model	A	B
DFM-305A-4	49	495.8	DFM-306A-4	49	636	DFM-307A-4	49	730.6
DFM-305A-6	52	510.8	DFM-306A-6	52	654	DFM-307A-6	52	751.6
DFM-305A-8	55	525.8	DFM-306A-8	55	672	DFM-307A-8	55	772.6
DFM-305A-11	60	550.8	DFM-306A-11	60	702	DFM-307A-11	60	807.6
DFM-305A-13	64	570.8	DFM-306A-13	64	726	DFM-307A-13	64	835.6
DFM-305A-14	66	580.8	DFM-306A-14	66	738	DFM-307A-14	66	849.6
DFM-305A-17	70	600.8	DFM-306A-17	70	762	DFM-307A-17	70	877.6
DFM-305A-19	74	620.8	DFM-306A-19	74	786	DFM-307A-19	74	905.6
DFM-305A-23	81	655.8	DFM-306A-23	81	828	DFM-307A-23	81	954.6
DFM-305A-25	84	670.8	DFM-306A-25	84	846	DFM-307A-25	84	975.6
DFM-305A-28	88	690.8	DFM-306A-28	88	870	DFM-307A-28	88	1003.6
DFM-305A-30	92	710.8	DFM-306A-30	92	894	DFM-307A-30	92	1031.6
DFM-305A-35	102	760.8	DFM-306A-35	102	954	DFM-307A-35	102	1101.6