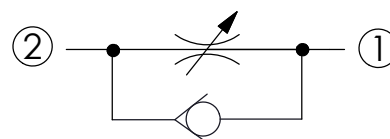
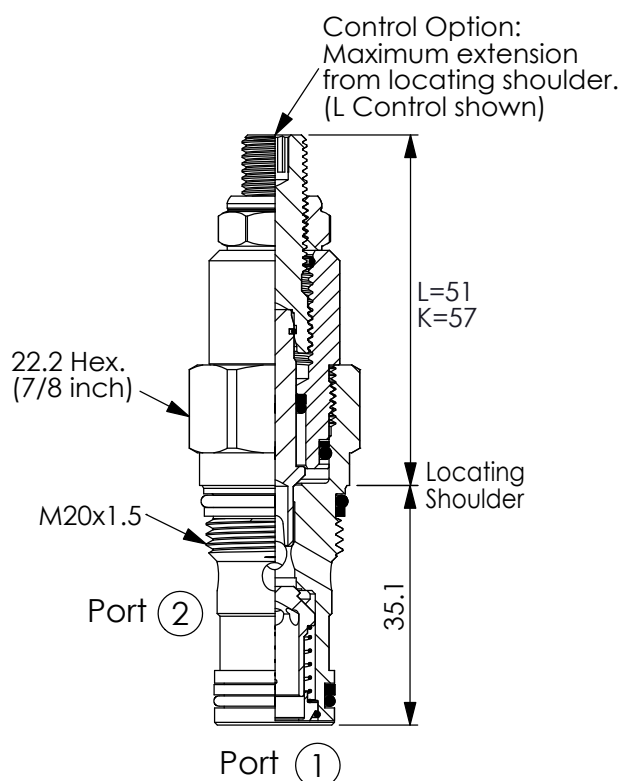


Ordering Code: **NC-13A-X-Y-Z**



### TECHNICAL DATA

Max. Operating pressure: 350 bar

Rated flow: 25 l/min ( $\Delta P=7$  bar)  
See Performance Chart

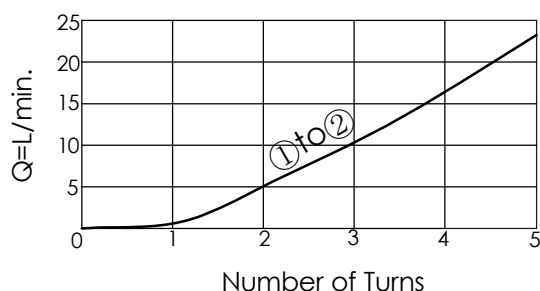
Cavity-Tooling: 13A-2

Installation torque: 40-50 Nm

Weight: 0.14 kg

UNIT:mm

Adjustment Sensitivity at 7 bar Differential



### X OPERATION

21 2 to 1 (Free Flow)

### Y

### OPTIONS

Maximum  
Nominal Orifice

Cracking Pressure

**BA**

$\phi$  4.8 mm

0.3 bar

**BC**

$\phi$  4.8 mm

2.0 bar

**CA**

$\phi$  2.3 mm

0.3 bar

**CC**

$\phi$  2.3 mm

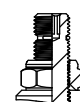
2.0 bar

### Z

### OPTIONS

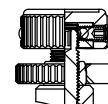
**L**

Leakproof hex.  
socket screw.



**K**

Handknob with  
Lock Konb.



**T**

Three-winged  
Handknob Kit.

