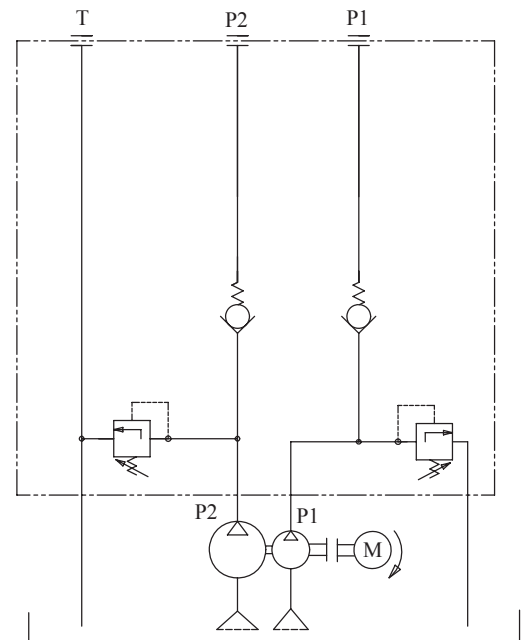
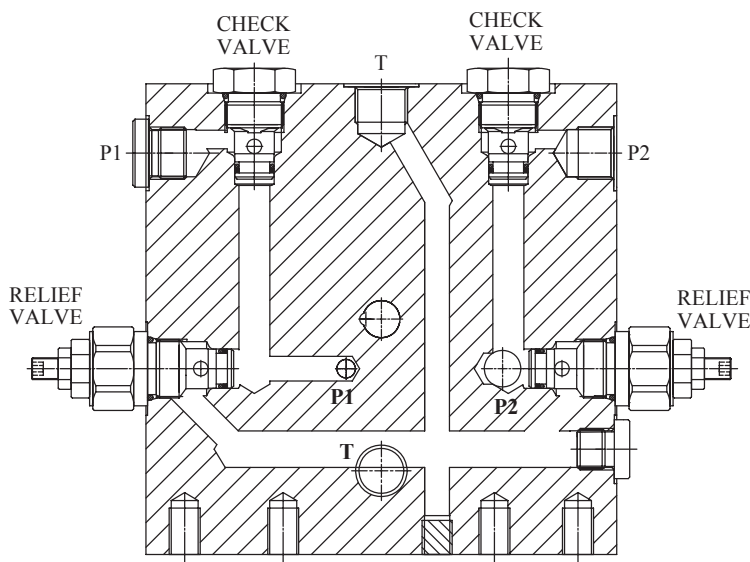


"Double-Pumps" Hydraulic Valves Diagram

"Double-Pumps" Hydraulic Schematic



The W85A series power pack is designed for applications that need two independent hydraulic power supply, but only use a single A.C. motor.

- ◆ Our standard AC motors range from 0.25HP to 3.0HP.
  - ◆ Pump capacity range is from 0.5cc/rev to 7.3cc/rev.
  - ◆ Standard tank sizes vary from 2.4L to 8.0L. Tailor made tanks are also available.
  - ◆ Hydraulic circuit valves can be inter-changed with the standard manifold.
- Custom made circuits are also available.

Before the power packs leave our factory they are fully inspected and tested by our QA/QC(ISO) team. If you have any questions or need a custom design, please feel free to contact us.