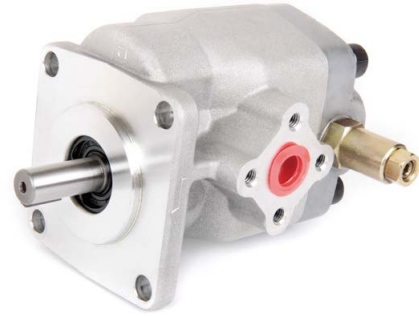
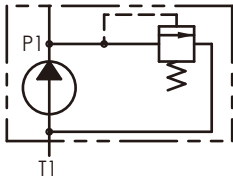


PR1

- Displacement : 2~12 cc/rev
- Max. Pressure : 250 kgf/cm²
(3500psi)
- Flange : JIS 4-bolt



SCHEMATIC SYMBOL



ORDER CODES

PR1 - **020** - **R** - **X** - **4BJ**

1

2

3

4

5

1 Model Name	PR1	
2 Delivery Capacity	020, 030, 040, 060, 075, 090, 105, 120	
3 Rotation Direction	R	clockwise
	L	counter - clockwise
4 Shaft Type	W	tang shaft
	X	straight shaft
	Y	spline shaft
	Z	taper shaft
5 Flange Mounting Type	4BJ	JIS 4-bolt

SPECIFICATIONS

Model	Accurate Displacement Capacity (cc/rev)	Operational Pressure (kgf/cm ²)	Max. Pressure (kgf/cm ²)	Speed (r.p.m.)			Weight (kg)
				Rate	Max.	Min.	
PR1-020	2	210	250	1800	5000	900	1.69
PR1-030	3	210	250	1800	5000	850	1.7
PR1-040	4	210	250	1800	4500	800	1.71
PR1-060	6	210	250	1800	3500	700	1.72
PR1-075	7.5	210	250	1800	3000	600	1.74
PR1-090	9	210	250	1800	2500	550	1.74
PR1-105	10.5	210	250	1800	2000	500	1.74
PR1-120	12	175	210	1800	2000	500	1.76

* PR1-025 and PR1-050 do not belong to regular products. Customized service can be provided.

DIMENSIONS (unit : mm)
