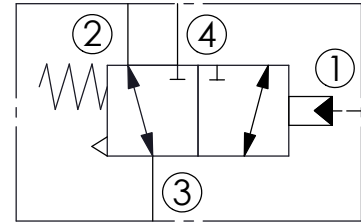
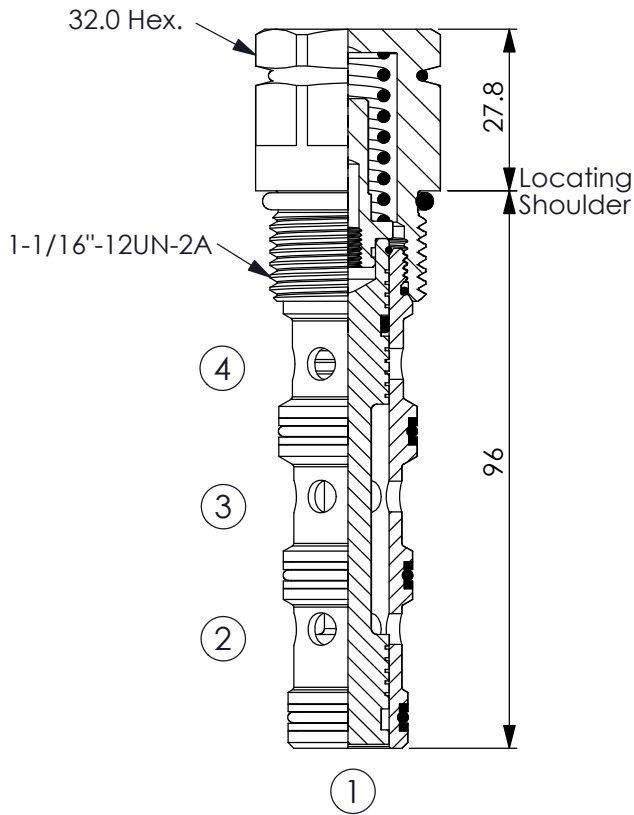


## DIRECTIONAL VALVE (Piloted 3 -Way Spool, External Vent)

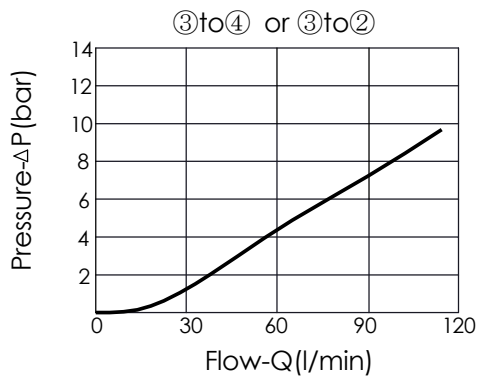
Ordering Code: **DD-12W-X-Y-Z**



### TECHNICAL DATA

Max. pressure:	240	bar
Rated flow:	80	l/min
Cavity-Tooling:	12W-4	
Installation torque:	45-55	Nm
Weight:	0.28	kg

UNIT:mm



### X OPERATION

**4S** External Vent

### Y SPRINGS

Cracking pressure

**70** 7.0 bar

### Z OPTIONS

**N** Non-adjustable