

## Check and Throttle Modular Valves

### Specifications

Model Number	Max. Operating Pressure MPa (PSI)	Max. Flow L/min (U.S.GPM)
MSCP-01-30	31.5 (4570)	35 (9.25)*

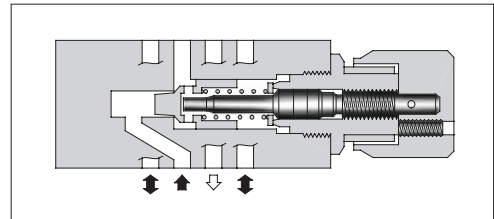
\* At the low differential pressure, maximum flow is limited. See "Pressure Drop at Throttle Fully Open".



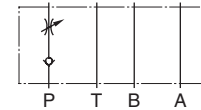
### Model Number Designation

F-	MSCP	-01	-30	*
Special Seals	Series Number	Valve Size	Design Number	Design Standard
<b>F:</b> Special Seals for Phosphate Ester Type Fluids (Omit if not required)	<b>MSCP :</b> Check and Throttle Valve for P-Line	<b>01</b>	<b>30</b>	Refer to *

\* Design Standards: None ..... Japanese Standard "JIS", European Design Standard and N. American Design Standard



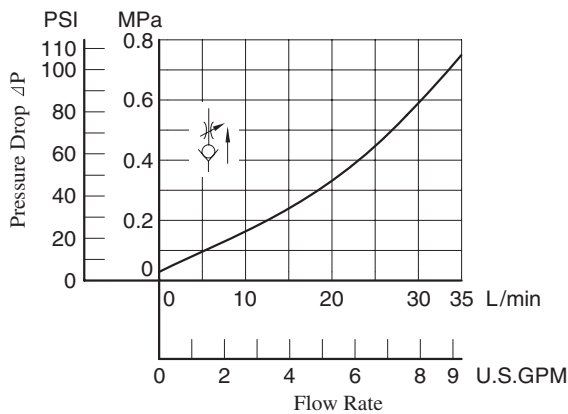
Graphic Symbol



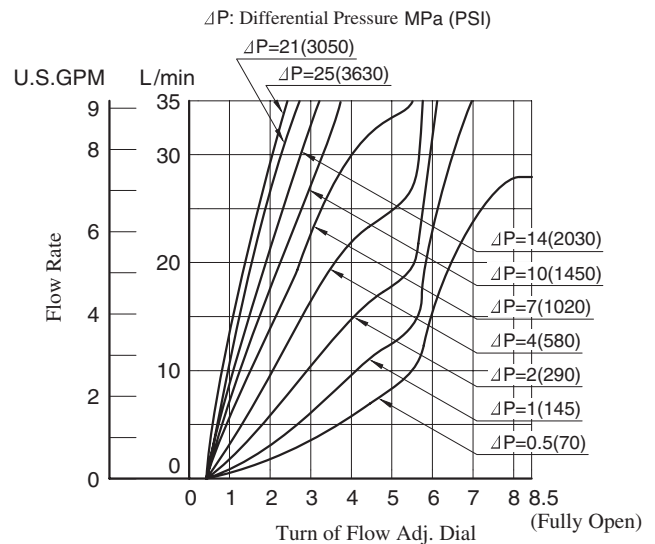
### Typical Performance Characteristics

Hydraulic Fluid: Viscosity 35 mm<sup>2</sup>/s (164 SSU), Specific Gravity 0.850

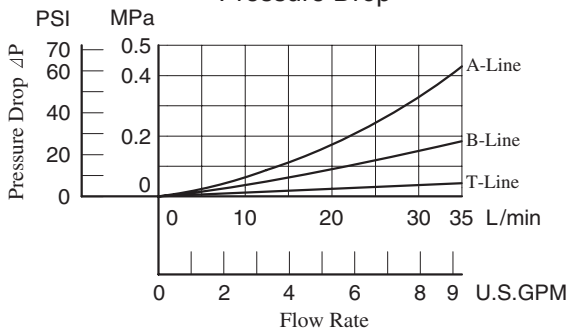
Pressure Drop at Throttle Fully Open



Metred Flow vs. Dial Position



Pressure Drop

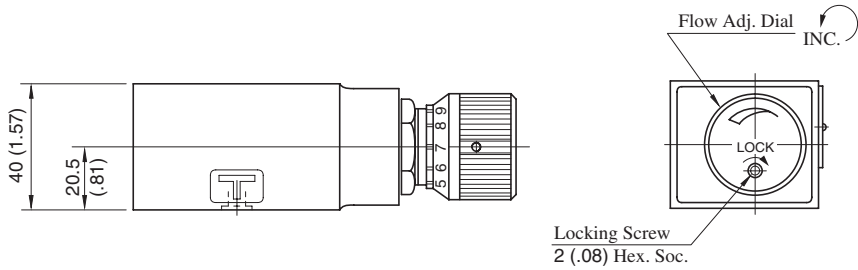
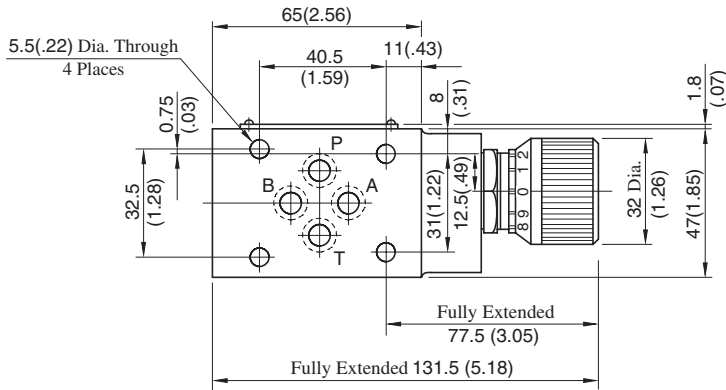


### Instructions

- To make flow rate adjustment, loosen locking screw for the dial and turn the flow adjustment dial clockwise or anti-clockwise. For a decrease of flow, turn the dial clockwise. Be sure to re-tighten the locking screw firmly after the adjustment of the flow rate.

**MSCP-01-30**

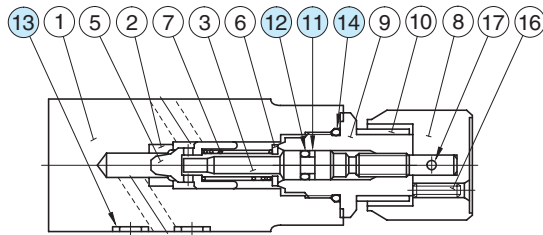
**DIMENSIONS IN  
MILLIMETRES (INCHES)**



Approx. Mass..... 1.2 kg (2.6 lbs.)

**■ Spare Parts List**

**MSCP-01-30**



**● List of Seals**

Item	Name of Parts	Part Numbers	Qty.	Remarks
11	Back Up Ring	SO-BB-P6	1	Included in Seal Kit Kit No.: KS-MSP-01-30
12	O-Ring	SO-NA-P6	1	
13	O-Ring	SO-NB-P9	4	
14	O-Ring	SO-NB-P18	1	