

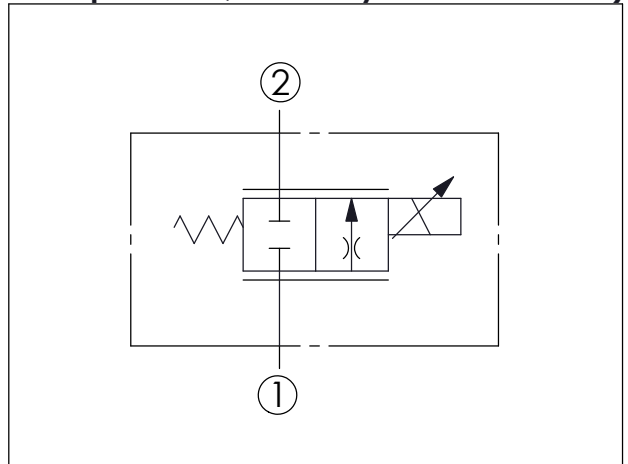
## FLOW CONTROL VALVE (Electro-Proportional, Normally Closed Throttle)

Ordering Code: **PFC-17E-X-Y-Z**

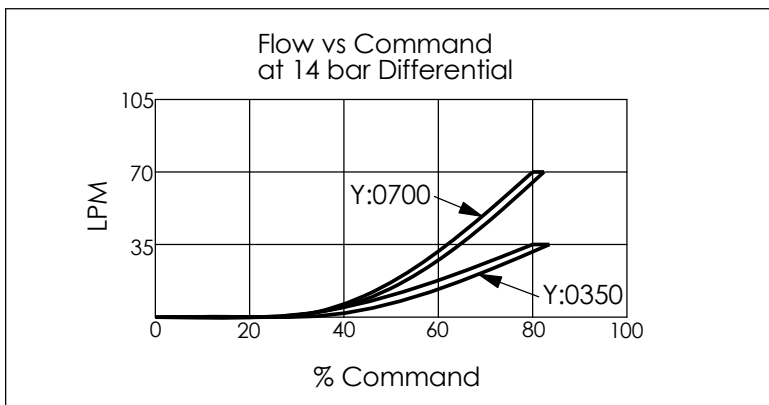
Coil EC-23C

G 3/4"

UNIT:mm



TECHNICAL DATA		
Max.Operating pressure:	350	bar
Rated flow:	70	l/min
Cavity-Tooling:	17E-2	
Installation torque:	45-55	Nm
Weight:(with Coil)	0.70	kg
(without Coil)	0.35	kg



X	OPERATION	
<b>2G</b>	2 Ports	30 Watt. Coil
NOTE:Coil must be ordered separately. Use 12V DC or 24V DC (Series EC-23C) coils only.		

Y	FLOW	
	NOMINAL CAPACITY	
<b>0350</b>	35 LPM	
<b>0700</b>	70 LPM	

Z	OPTIONS	
<b>M</b>	Manual Override (Standard)	