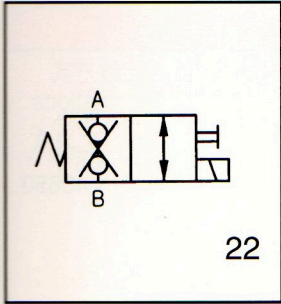


# ORDERING INFORMATION

<b>V2070</b>	<b>***</b>	<b>OA</b>	<b>**</b>	<b>10</b>
電動止回閥 Solenoid double check VALVE	線圈型式 Coil type D12:DC12v D24:DC24v RA 110V RA 220V (50 / 60 Hz)	OA:1 in 1 out OB:2 in 1 out	OPTION 標準 None:Standard (22) 付手動 OM:With manual	設計號碼 Design number

## Graphic Symbol



## DIMENSIONS

V2070						
常閉 Normally closed-NC	最大流量 Max. flow	額定流量 Rated flow	最大壓力 Max. pressure	溫度範圍 Operating temperature range	重量 kg(lbs)	接線方式 Terminations
常開 Normally open-NO	Litres/min		kgf/cm <sup>2</sup> (psi)			插頭式 DG:DIN 43650
NC 20	20 l/min (5.3 G.P.M)	15 l/min (4 G.P.M)	250(3500)	-20 °C ~ 120 °C	0.64(1.4) including coil	
22 NO						

## DIMENSIONS

## MILLMETERS (INCHES)

