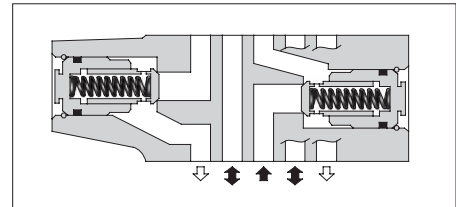
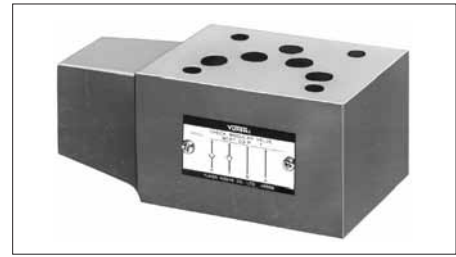


## Check Modular Valves For "P&T" Lines

### Specifications

Model Numbers	Max. Operating Pressure MPa (PSI)	Max. Flow L/min (U.S.GPM)
MCPT-03-P*-T*-10	25 (3630)	70 (18.5)



### Model Number Designation

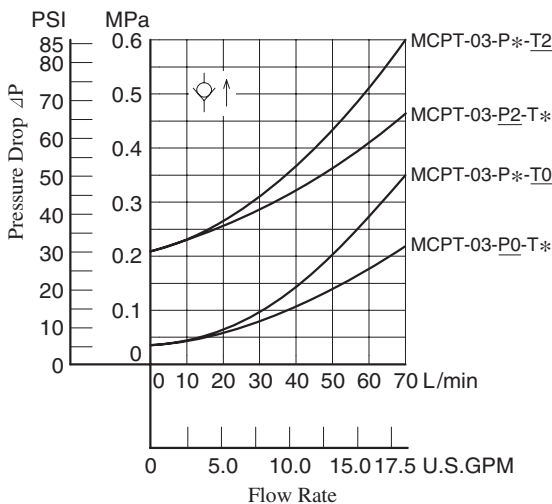
F-	MCPT	-03	-P0	-T0	-10	*
Special Seals	Series Number	Valve Size	Cracking Pres. of P-Line MPa(PSI)	Cracking Pres. of T-Line MPa(PSI)	Design Number	Design Standard
<b>F</b> : Special Seals for Phosphate Ester Type Fluids (Omit if not required)	<b>MCPT</b> : Check Valve for P&T-Lines	<b>03</b>	<b>P0</b> : 0.035(5) <b>P2</b> : 0.2(29)	<b>T0</b> : 0.035(5) <b>T2</b> : 0.2(29)	<b>10</b>	Refer to ★

★ Design Standards: None ..... Japanese Standard "JIS", European Design Standard and N. American Design Standard

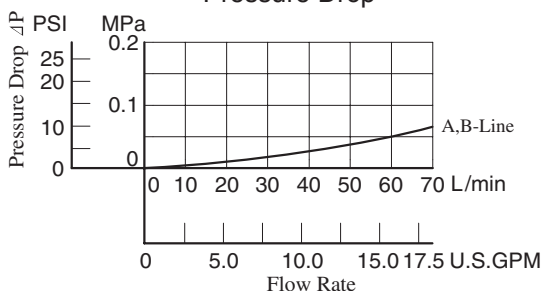
### Typical Performance Characteristics

Hydraulic Fluid: Viscosity 35 mm<sup>2</sup>/s (164 SSU), Specific Gravity 0.850

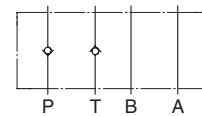
Pressure Drop for Free Flow



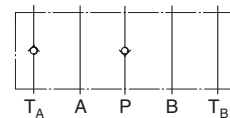
Pressure Drop



Graphic Symbol



Detailed Graphic Symbol



### Instructions

#### ● Tank Line Used

Check valve function of Tank Line is included in TA-Line. Therefore, the tank line for a circuit that uses this valve must be TA-line.

