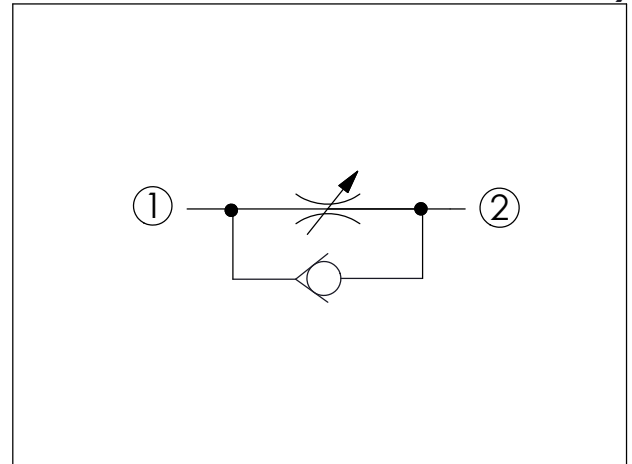
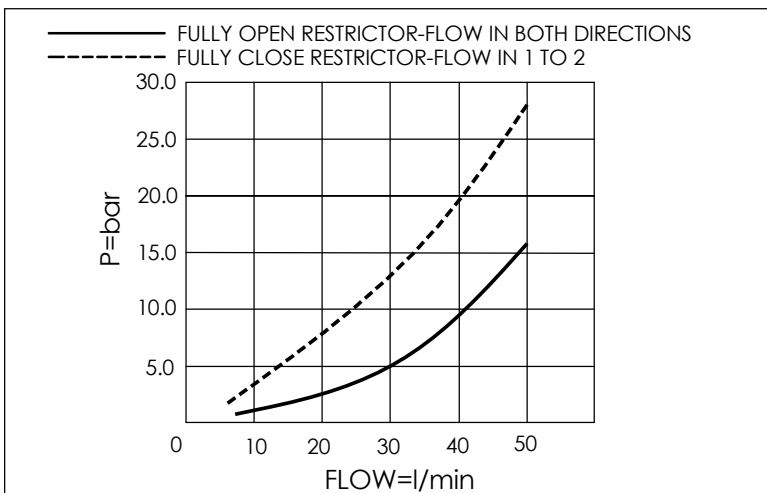


Ordering Code: **NC-08W-X-Y-Z**

UNIT:mm



TECHNICAL DATA		
Max. pressure:	350	bar
Rated Flow:	35 l/min ($\Delta P=7$ bar) See Performance Chart	
Cavity-Tooling:	08W-2	
Installation torque:	25-35	Nm
Weight:	0.12	kg



X	OPERATION	
20	1 to 2 (Free Flow)	

Y	MAXIMUM NOMINAL ORIFICE	
N	(Standard)	

Z	OPTIONS	
L	Leakproof hex. socket screw.	
E	Handknob and locknut.	
B	Handknob and aluminum locknut.	