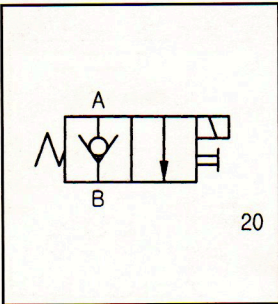


ORDERING INFORMATION

| | | | |
|---|---|--|--------------------------|
| V8067 | *** | ** | 10 |
| 電動止回閥 Cartridge solenoid check VALVE | 線圈型式 Coil type D12:DC12v D24:DC24v A11:AC110v A22:AC220v RA 110V RA 220V (50 / 60 Hz) | OPTION 標準 None:Standard(20) 付手動 OM:With manual | 設計號碼 Design number |

Graphic Symbol



DIMENSIONS

| V8067 | | | | | | | 接線方式 Terminations |
|--------------------------|-------------------|-------------------------|---------------------------|---|---------------|----------------------------|----------------------|
| 常閉 Normally closed-NC | 最大流量 Max. flow | 額定流量 Rated flow | 最大壓力 Max. pressure | 溫度範圍 Operating temperature range | 重量 kg(lbs) | 插頭式 DG:DIN 43650 | |
| 常開 Normally open-NO | Litres/min | | kgf/cm ² (psi) | | | | |
| NC | 20 | 150 l/min (40 G.P.M) | 120 l/min (32 G.P.M) | 250(3500) | -20°C ~ 120°C | 2.1(4.6) including coil | |
| | NO | | | | | | |

DIMENSIONS

MILLMETERS (INCHES)

