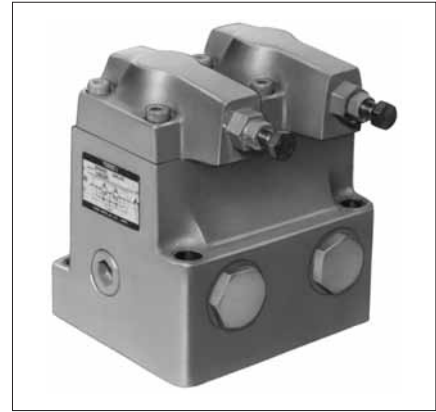
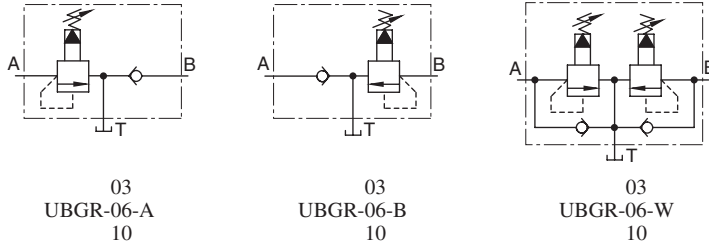


Brake Valves

Brake valves are used on hydraulic cylinders and in brake circuits of hydraulic motors. They can brake with any pressure, permitting smooth stopping.

Graphic Symbols



Specifications

Model Numbers	Max. Operating Pressure MPa (PSI)	Pres. Adj. Range MPa (PSI)	Max. Flow L/min (U.S.GPM)
UBGR - 03 - * - B - 20 *	25 (3630)	0.7 - 7.0 (100 - 1020)	50 (13.2)
UBGR - 03 - * - H - 20 *		3.5 - 25 (510 - 3630)	
UBGR - 06 - * - 20 *		0.7 - 25 (100 - 3630)	125 (33.0)
UBGR - 10 - * - 20 *		0.7 - 25 (100 - 3630)	200 (52.8)

Model Number Designation

F-	UBGR	-03	-A	-B	-20	*
Special Seals	Series Number	Valve Size	Type	Pres. Adj. Range MPa (PSI)	Design Number	Design Standards
F: Special Seals for Phosphate Ester Type Fluids (Omit if not required)	UBGR: Brake Valves, Sub-plate Mounting	03	A: For A-Line B: For B-Line W: For A•B-Lines	B: 0.7-7.0 (100-1020) H: 3.5-25 (510-3630)	20	Refer to ★
		06		None: 0.7-25 (100-3630)	20	
		10			20	

★ Design Standards: None Japanese Standard "JIS" and European Design Standard 90 N. American Design Standard

- Consult Yuken when detailed material such as dimensions figures is required.