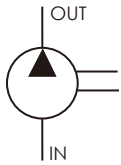


# HGP-5AI

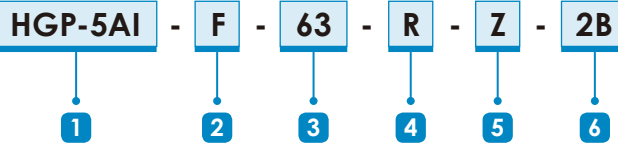
- ▶ Displacement : 22~90 cc/rev
- ▶ Max. Pressure : 330 kgf/cm<sup>2</sup>  
( 4620psi )
- ▶ Flange : SAE 2-bolt, DIN 4-bolt



## SCHEMATIC SYMBOL



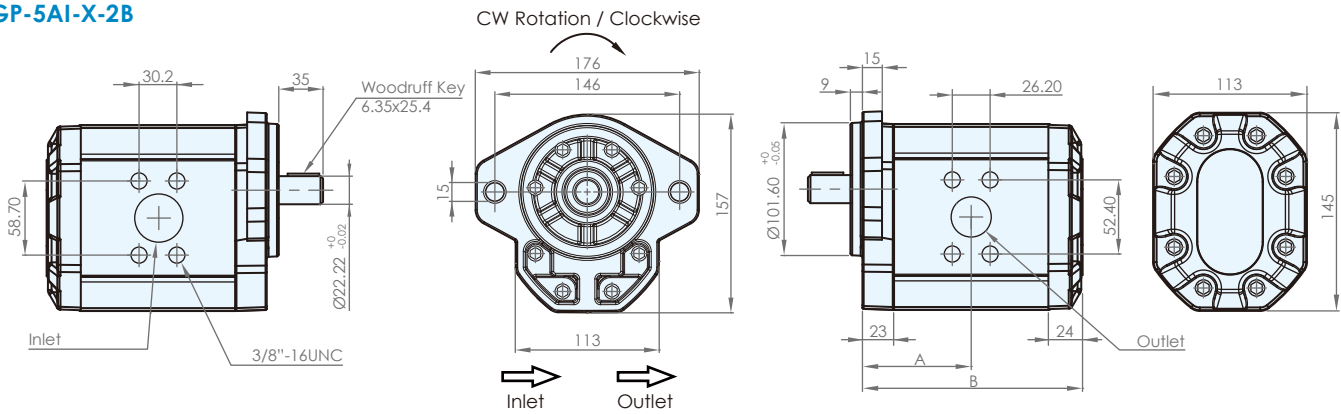
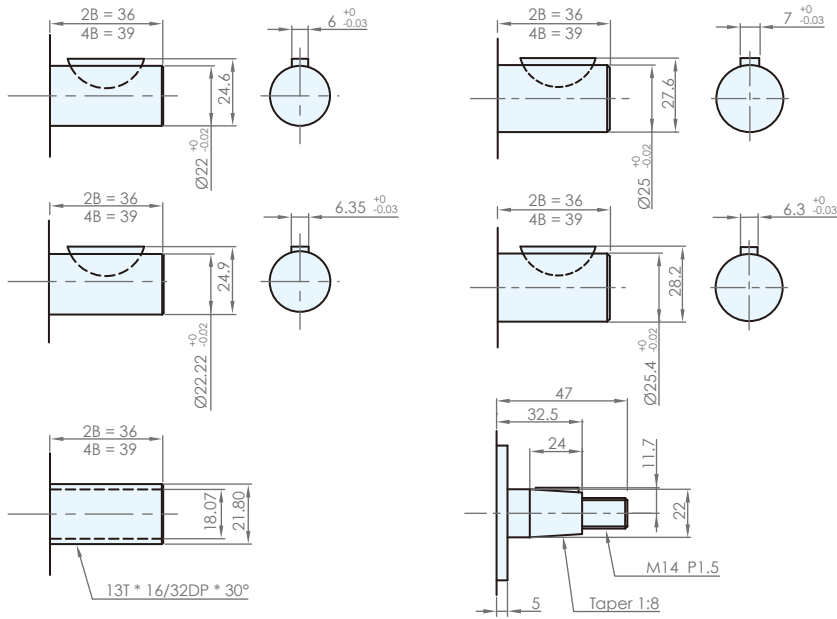
## ORDER CODES



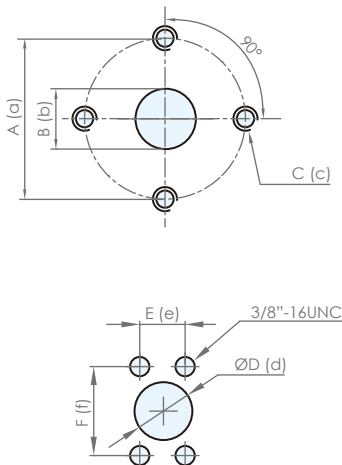
<b>1</b> Model Name	HGP-5AI	
<b>2</b> Mounting	F	flange type
<b>3</b> Delivery Capacity	22, 26, 33, 44, 48, 55, 63, 75, 80, 90	
<b>4</b> Rotation Direction	R	clockwise
	L	counter - clockwise
<b>5</b> Shaft Type	X	straight shaft
	Y	spline shaft
	Z	taper shaft
<b>6</b> Flange Mounting Type	2B	SAE 2-bolt
	4BD	DIN 4-bolt

## SPECIFICATIONS

Model	Accurate Displacement Capacity (cc/rev)	Operational Pressure (kgf/cm <sup>2</sup> )	Max. Pressure (kgf/cm <sup>2</sup> )	Speed (r.p.m.)		Ports Size (PT)		Weight (kg)
				Loaded	Unloaded	Inlet	Outlet	
HGP-5AI-22	22	280	330	3000	700	1"	3/4"	8.96
HGP-5AI-26	26	280	330	3000	700	1"	3/4"	9.04
HGP-5AI-33	33	280	330	3000	700	1"	3/4"	9.18
HGP-5AI-44	44	240	290	3000	700	1 1/4"	1"	9.40
HGP-5AI-48	48	240	290	3000	700	1 1/4"	1"	9.48
HGP-5AI-55	55	210	255	3000	700	1 1/4"	1"	9.62
HGP-5AI-63	63	210	240	3000	600	1 1/4"	1"	9.78
HGP-5AI-75	75	190	210	3000	600	1 1/4"	1"	10.02
HGP-5AI-80	80	180	210	3000	600	1 1/4"	1"	10.12
HGP-5AI-90	90	170	190	2500	600	1 1/4"	1"	10.32

**DIMENSIONS (unit : mm)**
**HGP-5AI-X-2B**

**ADDITIONAL DIMENSION (unit : mm)**
**Dimension of Shaft**


Model	A	B
HGP-5AI-2B-22	56.5	117
HGP-5AI-2B-26	58.5	121
HGP-5AI-2B-33	61	126
HGP-5AI-2B-44	65	134
HGP-5AI-2B-48	66.5	137
HGP-5AI-2B-55	69	142
HGP-5AI-2B-63	71	146
HGP-5AI-2B-75	76	156
HGP-5AI-2B-80	78	160
HGP-5AI-2B-90	81.5	167

**Inlet and Outlet Size**

**Flange Type**

Inlet			Outlet		
A	B	C	a	b	c
40	22	M8	40	22	M8
51	27	M10	51	27	M10
62	34	M10	62	34	M10
62	34	M12	62	34	M12

**Flange Type**

Model	Inlet			Outlet		
	D	E	F	d	e	f
HGP-5A-22, 26, 33, 44, 48, 55	$\varnothing 30$	26.2	52.4	$\varnothing 25$	22.2	47.6
HGP-5A-63, 75, 80, 90	$\varnothing 30$	30.2	58.7	$\varnothing 25$	26.2	52.4