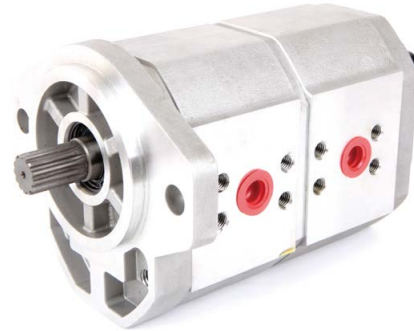
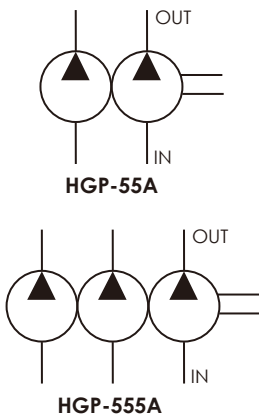


HGP-55A

- Displacement : 22~90 cc/rev (single)
- Max. Pressure : 300 kgf/cm²
(4200psi)
- Flange : SAE 2-bolt, DIN 4-bolt



SCHEMATIC SYMBOL



ORDER CODES



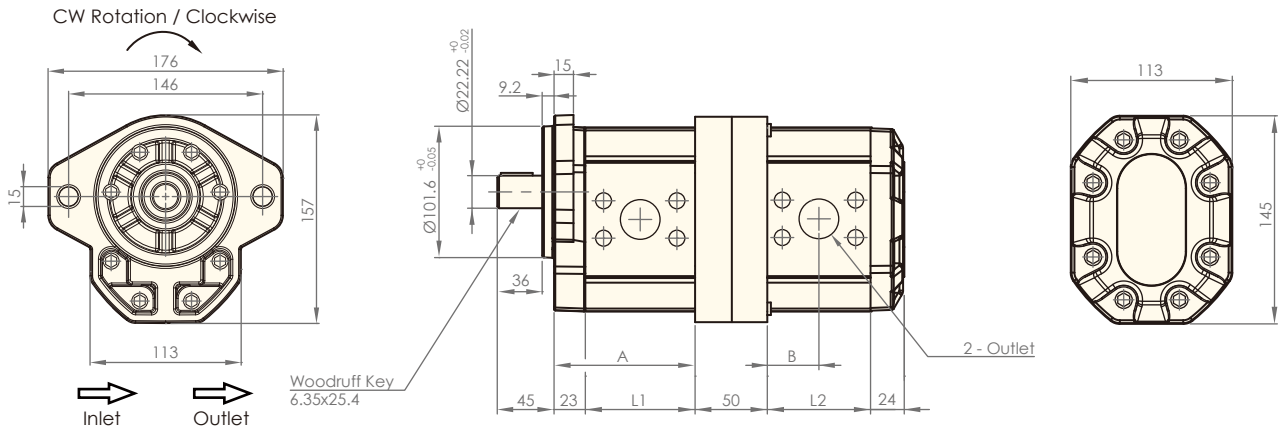
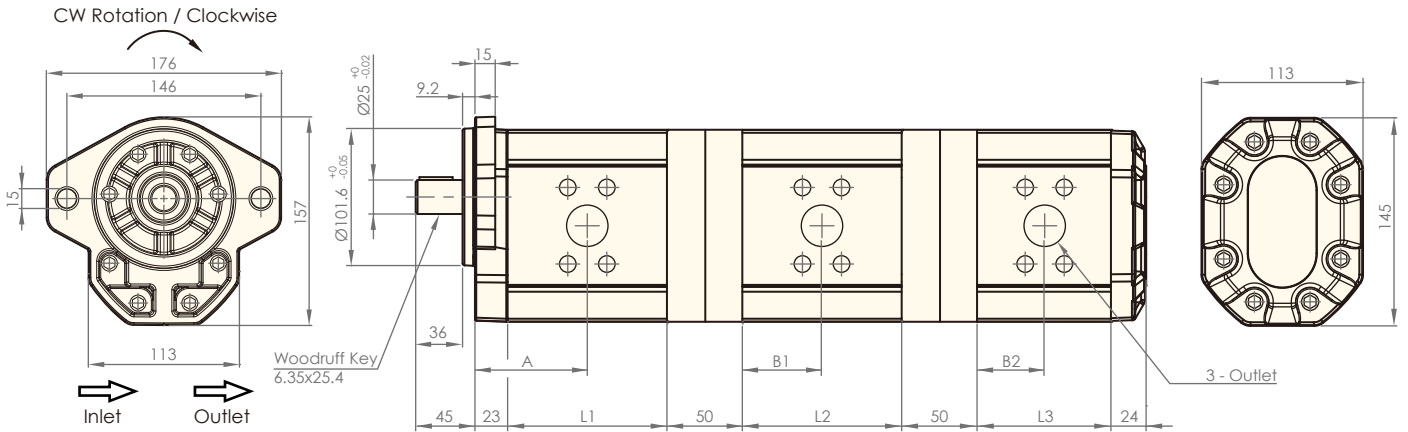
1	Model Name	HGP-55A, HGP-555A	
2	Mounting	F	flange type
		L	foot type
3	Delivery Capacity	2222, 2626, 3333, 4444, 4848, 5555, 6363, 7575, 8080, 9090	
4	Rotation Direction	R	clockwise
		L	counter - clockwise
5	Shaft Type	X	straight shaft
		Y	spline shaft
		Z	taper shaft
6	Flange Mounting Type	2B	SAE 2-bolt
		4BD	DIN 4-bolt

SPECIFICATIONS

Model	Accurate Displacement Capacity (cc/rev)	Operational Pressure (kgf/cm ²)	Max. Pressure (kgf/cm ²)	Speed (r.p.m.)		Ports Size (PT)		Weight (kg)
				Loaded	Unloaded	Inlet	Outlet	
HGP-55A-2222	22+22	250	300	3000	700	1"	3/4"	11.22
HGP-55A-2626	26+26	250	300	3000	700	1"	3/4"	11.38
HGP-55A-3333	33+33	250	300	3000	700	1"	3/4"	11.66
HGP-55A-4444	44+44	210	250	3000	700	1 1/4"	1"	12.10
HGP-55A-4848	48+48	210	250	3000	700	1 1/4"	1"	12.26
HGP-55A-5555	55+55	210	250	3000	700	1 1/4"	1"	12.54
HGP-55A-6363	63+63	210	250	3000	600	1 1/4"	1"	12.86
HGP-55A-7575	75+75	180	210	3000	600	1 1/4"	1"	13.34
HGP-55A-8080	80+80	170	200	3000	600	1 1/4"	1"	13.54
HGP-55A-9090	90+90	160	190	2500	600	1 1/4"	1"	13.94

* We provide many options to meet your displacement inquiries of tandem gear pumps, such as HGP-55A-8063 (80+63 cc/rev).

DIMENSIONS (unit : mm)

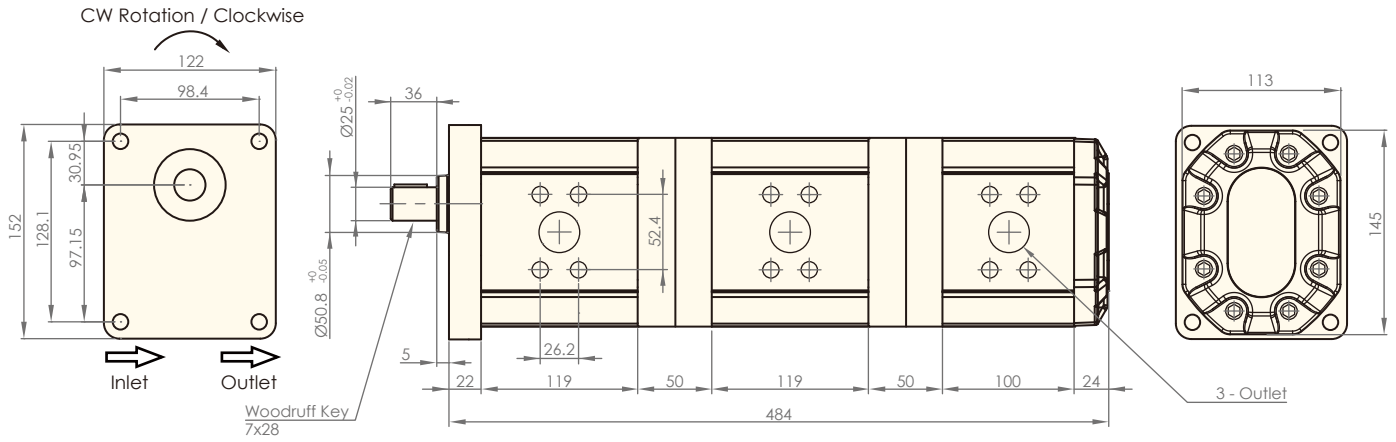
HGP-55A-2B

HGP-555A-2B


Model	L1, L2	A	B
HGP-55A-22	68	57	34
HGP-55A-26	71	58.5	35.5
HGP-55A-33	76	61	38
HGP-55A-44	84	65	42
HGP-55A-48	87	66.5	43.5
HGP-55A-55	92	69	46
HGP-55A-63	98	72	49
HGP-55A-75	106	76	53
HGP-55A-80	110	78	55
HGP-55A-90	117	81.5	58.5

Model	L1, L2, L3	A	B
HGP-555A-22	68	57	34
HGP-555A-26	71	58.5	35.5
HGP-555A-33	76	61	38
HGP-555A-44	84	65	42
HGP-555A-48	87	66.5	43.5
HGP-555A-55	92	69	46
HGP-555A-63	98	72	49
HGP-555A-75	106	76	53
HGP-555A-80	110	78	55
HGP-555A-90	117	81.5	58.5

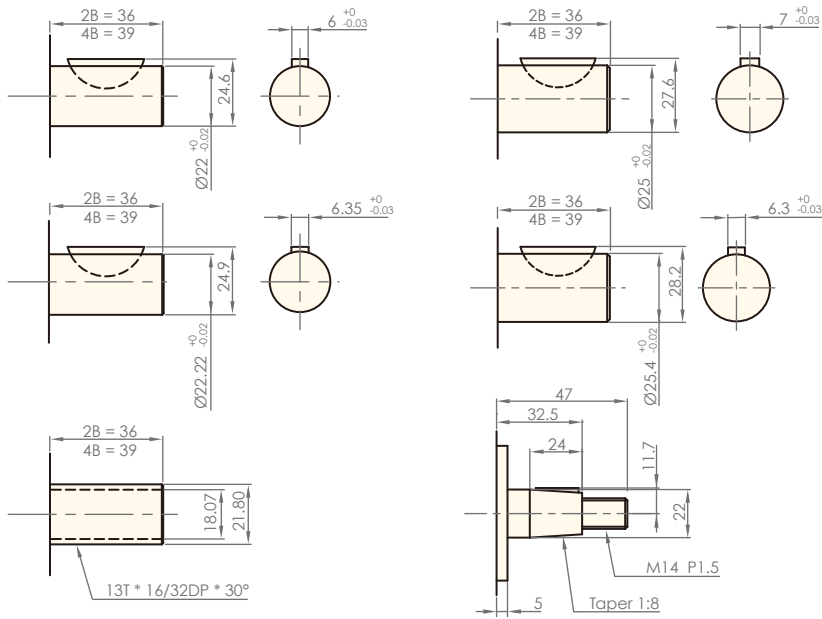
DIMENSIONS (unit : mm)

HGP-555A-4B

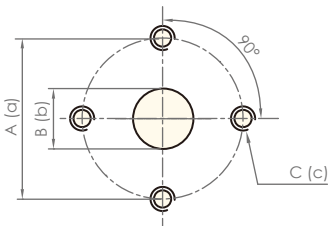


ADDITIONAL DIMENSION (unit : mm)

Dimension of Shaft

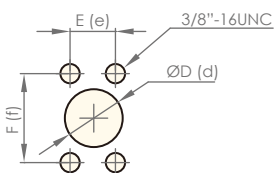


Inlet and Outlet Size



Flange Type

Inlet			Outlet		
A	B	C	a	b	c
40	22	M8	40	22	M8
51	27	M10	51	27	M10
62	34	M10	62	34	M10
62	34	M12	62	34	M12



Flange Type

Model	Inlet			Outlet		
	D	E	F	d	e	f
HGP-55A, 555A-22, 26, 33, 44, 48, 55	Ø30	26.2	52.4	Ø25	22.2	47.6
HGP-55A, 555A-63, 75, 80, 90	Ø30	30.2	58.7	Ø25	26.2	52.4