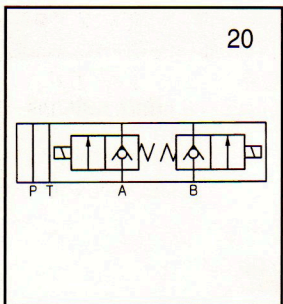


ORDERING INFORMATION

V2072	***	**	10
電動止回閥 Modular solenoid check VALVE	線圈型式 Coil type D12:DC12v D24:DC24v A24:AC24v A11:AC110v A22:AC220v A38:AC380v RA 110V RA 220V (50 / 60 Hz)	OPTION 標準 None:Standard(20) 付手動 OM:With manual	設計號碼 Design number

Graphic Symbol ■ DIMENSIONS



V2072							
常閉 Normally closed-NC		最大流量 Max. flow	額定流量 Rated flow	最大壓力 Max. pressure	溫度範圍 Operating temperature range	重量 kg(lbs)	接線方式 Terminations
常開 Normally open-NO		Litres/min		kgf/cm ² (psi)			插頭式 DG:DIN 43650
NC	20 22	21 23	20 l/min (5.3 G.P.M)	15 l/min (4 G.P.M)	250(3500)	-20℃~120℃	出線2條式 DL:lead wires(2)
						1.15(2.53) including coil	

■ DIMENSIONS

MILLMETERS (INCHES)

