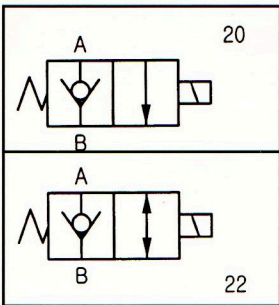


# ORDERING INFORMATION

<b>V2066</b>	<b>***</b>	<b>**</b>	<b>10</b>
電動止回閥 Cartridge solenoid check VALVE	線圈型式 Coil type D12:DC12v D24:DC24v A24:AC24v A11:AC110v A22:AC220v A38:AC380v RA 110V RA 220V (50 / 60 Hz)	OPTION 標準 None:Standard(20)  付手動 OM:With manual	設計號碼 Design number

## Graphic Symbol



## DIMENSIONS

V2066							
常閉 Normally closed-NC		最大流量 Max. flow	額定流量 Rated flow	最大壓力 Max. pressure	溫度範圍 Operating temperature range	重量 kg(lbs)	接線方式 Terminations
常開 Normally open-NO		Litres/min		kgf/cm <sup>2</sup> (psi)			插頭式 DG:DIN 43650
NC	20 22	— —	20 l/min (5.3 G.P.M)	15 l/min (4 G.P.M)	250(3500)	-20 °C ~ 120 °C	出線2條式 DL:lead wires(2)
						0.28 (0.61) including coil	

## DIMENSIONS

## MILLMETERS (INCHES)

