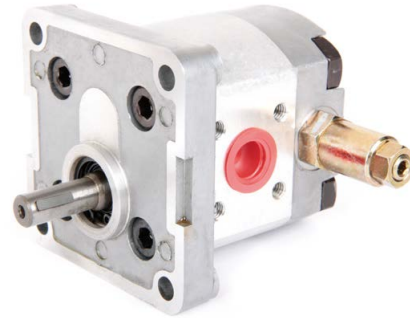
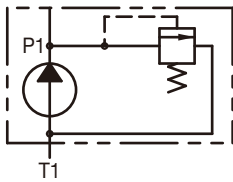


# PR2

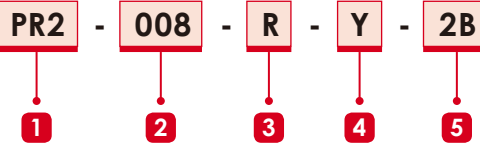
- Displacement : 0.8~7.8 cc/rev
- Max. Pressure : 250 kgf/cm<sup>2</sup>  
( 3500psi )
- Flange : SAE 2-bolt, DIN 4-bolt,  
European 4-bolt



## SCHEMATIC SYMBOL



## ORDER CODES

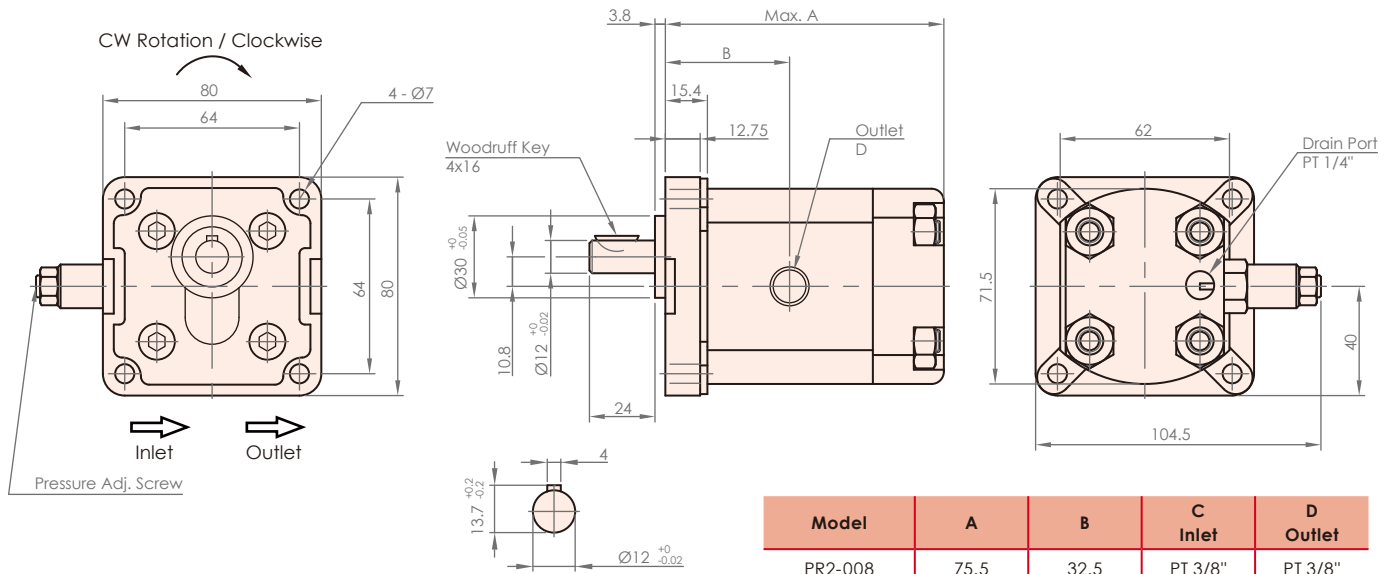


<b>1</b> Model Name	PR2	
<b>2</b> Delivery Capacity	008, 010, 020, 030, 040, 050, 060, 080	
<b>3</b> Rotation Direction	R	clockwise
	L	counter - clockwise
<b>4</b> Shaft Type	W	tang shaft
	X	straight shaft
	Y	spline shaft
<b>5</b> Flange Mounting Type	2B	SAE 2-bolt
	4BD	DIN 4-bolt
	4BE	European 4-bolt

## SPECIFICATIONS

Model	Accurate Displacement Capacity (cc/rev)	Operational Pressure (kgf/cm <sup>2</sup> )	Max. Pressure (kgf/cm <sup>2</sup> )	Speed (r.p.m.)			Weight (kg)
				Rate	Max.	Min.	
PR2-008	0.8	210	250	1800	4500	1000	1.0
PR2-010	1	210	250	1800	4500	1000	1.0
PR2-020	2	210	250	1800	4500	600	1.05
PR2-030	3	210	250	1800	4500	600	1.15
PR2-040	4	210	250	1800	4000	600	1.18
PR2-050	5	210	250	1800	3200	600	1.2
PR2-060	6	210	250	1800	3200	600	1.3
PR2-080	7.8	175	210	1800	3200	600	1.4

\* PR2-008 and PR2-026 do not belong to regular products. Customized service can be provided.

**DIMENSIONS** (unit : mm)


Model	A	B	C Inlet	D Outlet
PR2-008	75.5	32.5	PT 3/8"	PT 3/8"
PR2-010	77.5	33.5	PT 3/8"	PT 3/8"
PR2-020	80.1	34.8	PT 3/8"	PT 3/8"
PR2-030	85.5	37.5	PT 3/8"	PT 3/8"
PR2-040	87.5	38.5	PT 3/8"	PT 3/8"
PR2-050	91.5	40.5	PT 3/8"	PT 3/8"
PR2-060	95.5	42.5	PT 3/8"	PT 3/8"
PR2-080	101.5	45.5	PT 1/2"	PT 3/8"