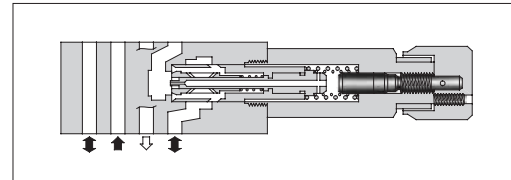


## Pressure and Temperature Compensated Flow Control (and Check) Modular Valves

### Specifications

Model Numbers	Max. Operating Pressure MPa (PSI)	Max. Metred Flow L/min (U.S.GPM)	Max. Free Flow L/min (U.S.GPM)
MFP-01-10	16 (2320)	35 (9.25)	—
MFA-01-*-10			35 (9.25)
MFB-01-*-10 MFW-01-*-10			



### Model Number Designation

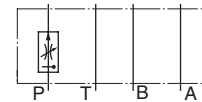
F-	MFA	-01	-X	-10	
Special Seals	Series Number	Valve Size	Direction of Flow	Design Number	Design Standard
<b>F:</b> Special Seals for Phosphate Ester Type Fluids (Omit if not required)	<b>MFP</b> : Flow Control Valve for P-Line	<b>01</b>	—	<b>10</b>	Refer to ★
	<b>MFA</b> : Flow Control and Check Valve for A-Line		<b>X</b> : Metre-out <b>Y</b> : Metre-in	<b>10</b>	
	<b>MFB</b> : Flow Control and Check Valve for B-Line <b>MFW</b> : Flow Control and Check Valve for A&B-Lines				

★ Design Standards: None ..... Japanese Standard "JIS", European Design Standard and N. American Design Standard

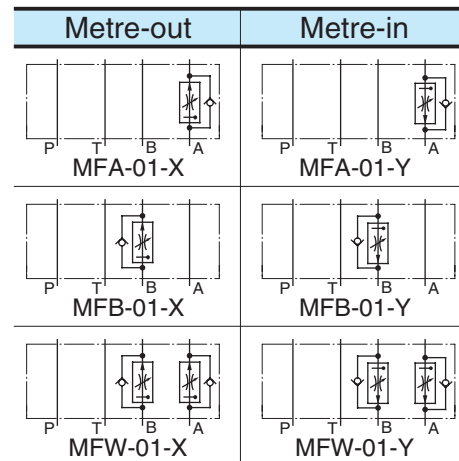
### Instructions

- To make flow rate adjustment, loosen locking screw for the dial and turn the flow adjustment dial clockwise or anti-clockwise. For a decrease of flow, turn the dial clockwise. Be sure to re-tighten the locking screw firmly after the adjustment of the flow rate.

### Graphic Symbols



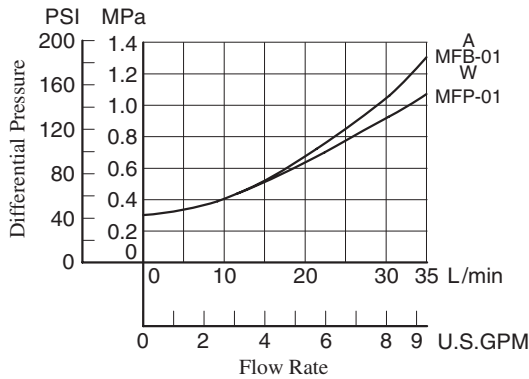
MFP-01



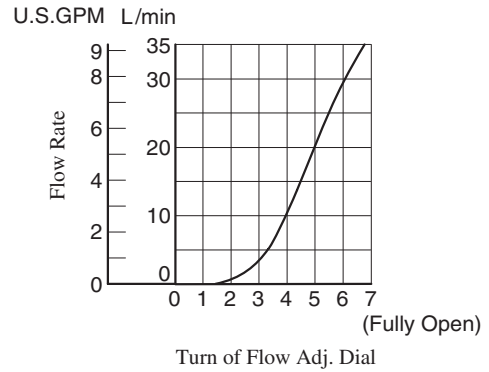
**Typical Performance Characteristics**

Hydraulic Fluid: Viscosity 35 mm<sup>2</sup>/s (164 SSU), Specific Gravity 0.850

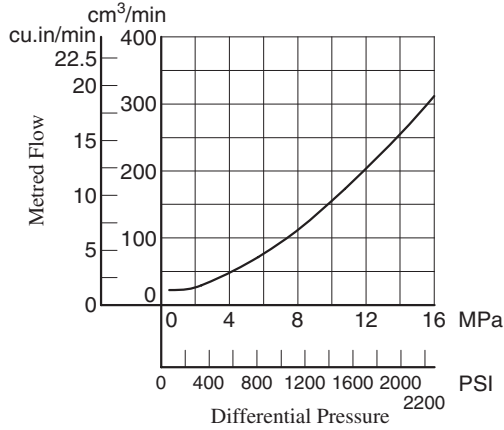
**Min. Required Pressure Difference**



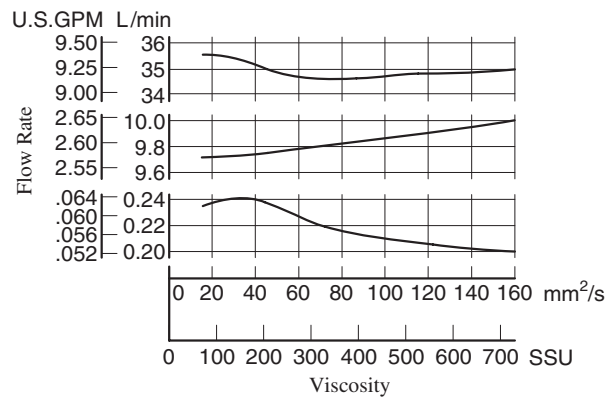
**Metred Flows vs. Dial Position**



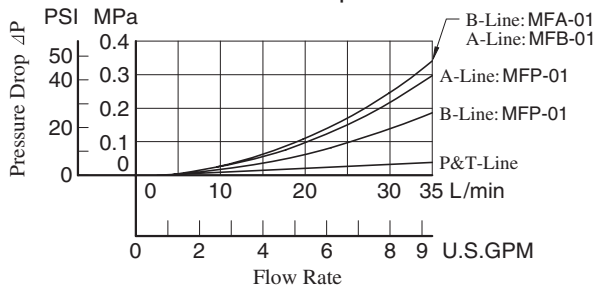
**Min. Metred Flow**



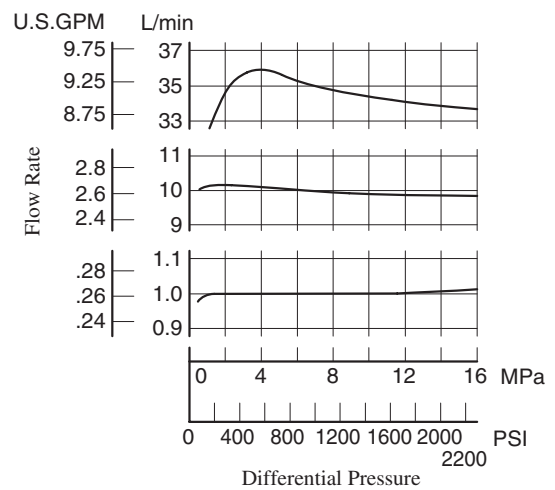
**Metred Flow vs. Viscosity**



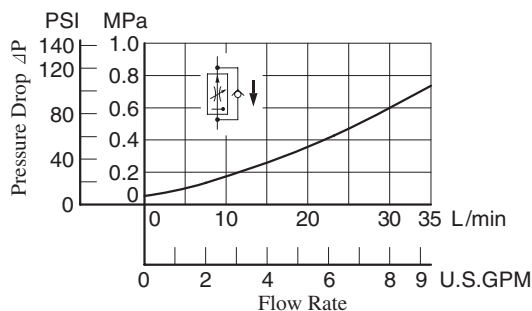
**Pressure Drop**



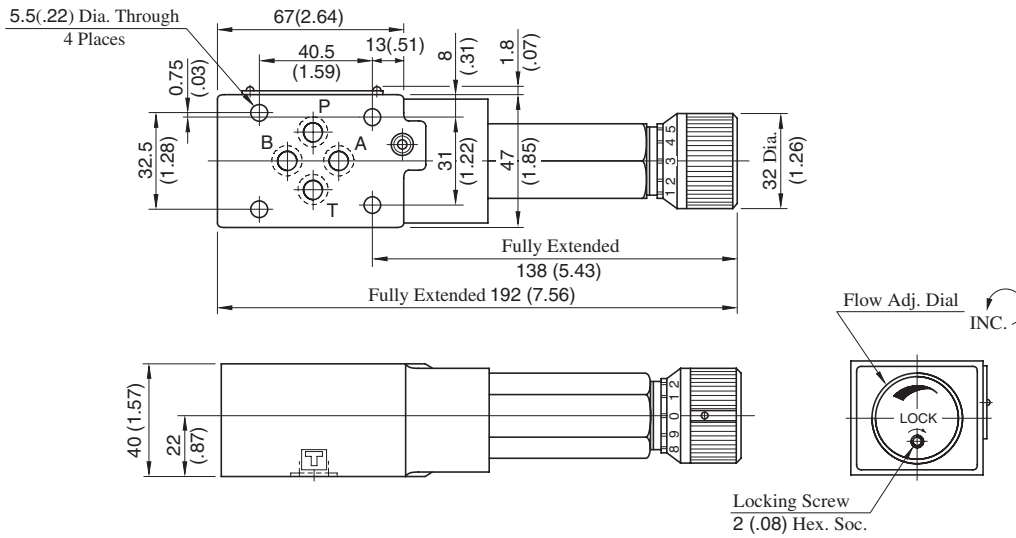
**Metred Flow vs. Differential Pres.**



**Pressure Drop for Free Flow**

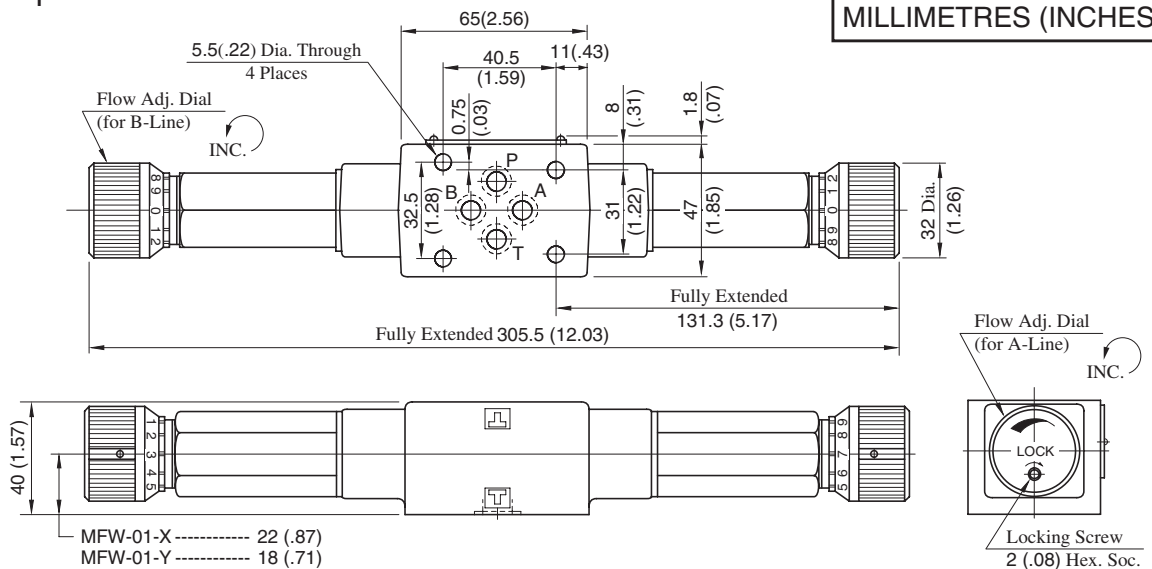


## MFP-01-10



Approx. Mass..... 1.7 kg (3.8 lbs.)

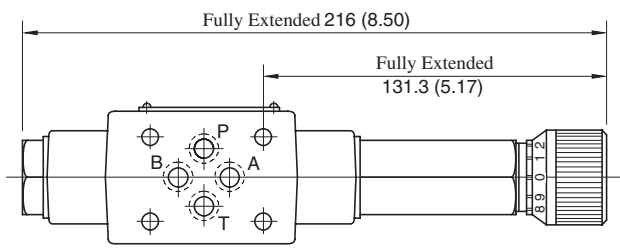
## MFW-01-X-10



DIMENSIONS IN  
MILLIMETRES (INCHES)

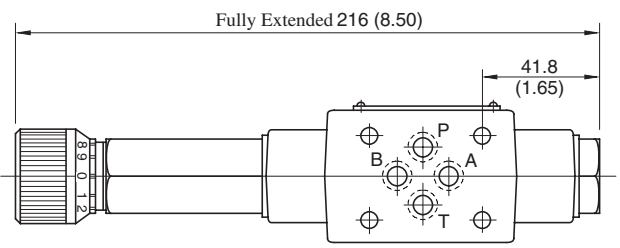
Approx. Mass..... 2.1 kg (4.6 lbs.)

## MFA-01-X-10



Approx. Mass..... 1.6 kg (3.5 lbs.)

## MFB-01-X-10



Approx. Mass..... 1.6 kg (3.5 lbs.)

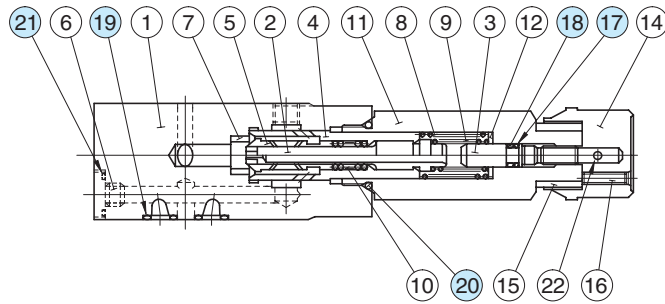
• For other dimensions, refer to "MFW-01" drawing above.



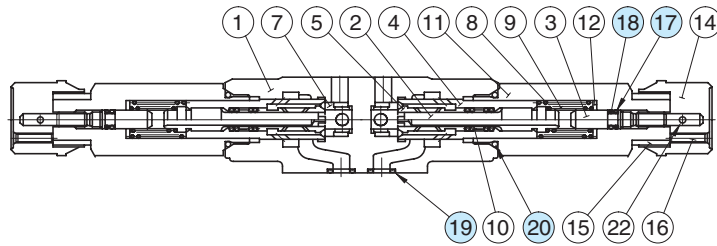
01 Series Modular Valves

■ Spare Parts List

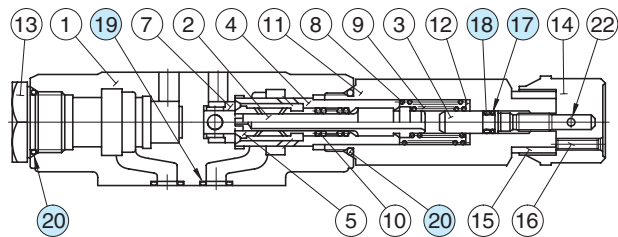
MFP-01-10



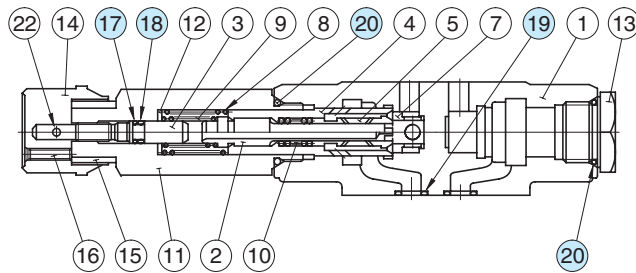
MFW-01-X<sub>Y</sub>-10



MFA-01-X<sub>Y</sub>-10



MFB-01-X<sub>Y</sub>-10



● List of Seals

Item	Name of Parts	Part Numbers	Quantity			
			MFP-01	MFA-01	MFB-01	MFW-01
17	Back Up Ring	SO-BB-P6	1	1	1	2
18	O-Ring	SO-NA-P6	1	1	1	2
19	O-Ring	SO-NB-P9	4	4	4	4
20	O-Ring	SO-NB-P18	1	2	2	2
21	O-Ring	SO-NB-P10	1	—	—	—

● List of Seal Kits

Valve Model Numbers	Seal Kit Numbers
MFP-01	KS-MFP-01-10
MFA-01	KS-MFA-01-10
MFB-01	
MFW-01	KS-MFW-01-10

Note: When ordering seals, please specify the seal kit number from the table right.