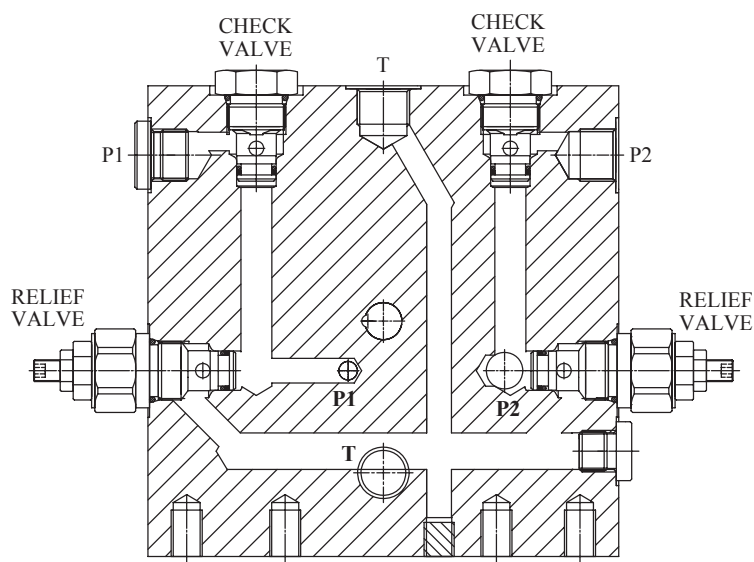
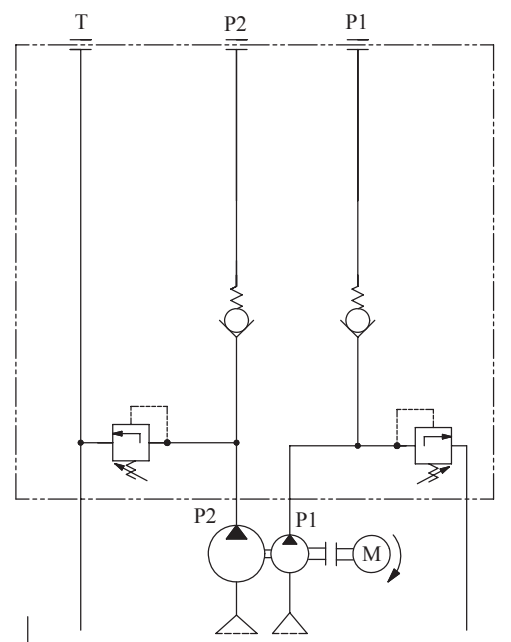


"Double-Pumps" Hydraulic Valves Diagram



"Double-Pumps" Hydraulic Schematic



The W85D series power pack is designed for applications that need two independent hydraulic power supply, but only use a single D.C. motor.

- ◆DC motors range from 0.55KW to 3.0KW; as well as DC 12 and 24 volts.
 - ◆Pump capacity range is from 0.5cc/rev to 7.3cc/rev.
 - ◆Standard tank sizes vary from 2.4L to 8.0L. Tailor made tanks are also available.
 - ◆Hydraulic circuit valves can be inter-changed with the standard manifold.
- Custom made circuits are also available.

Before the power packs leave our factory they are fully inspected and tested by our QA/QC(ISO) team. If you have any questions or need a custom design, please feel free to contact us.